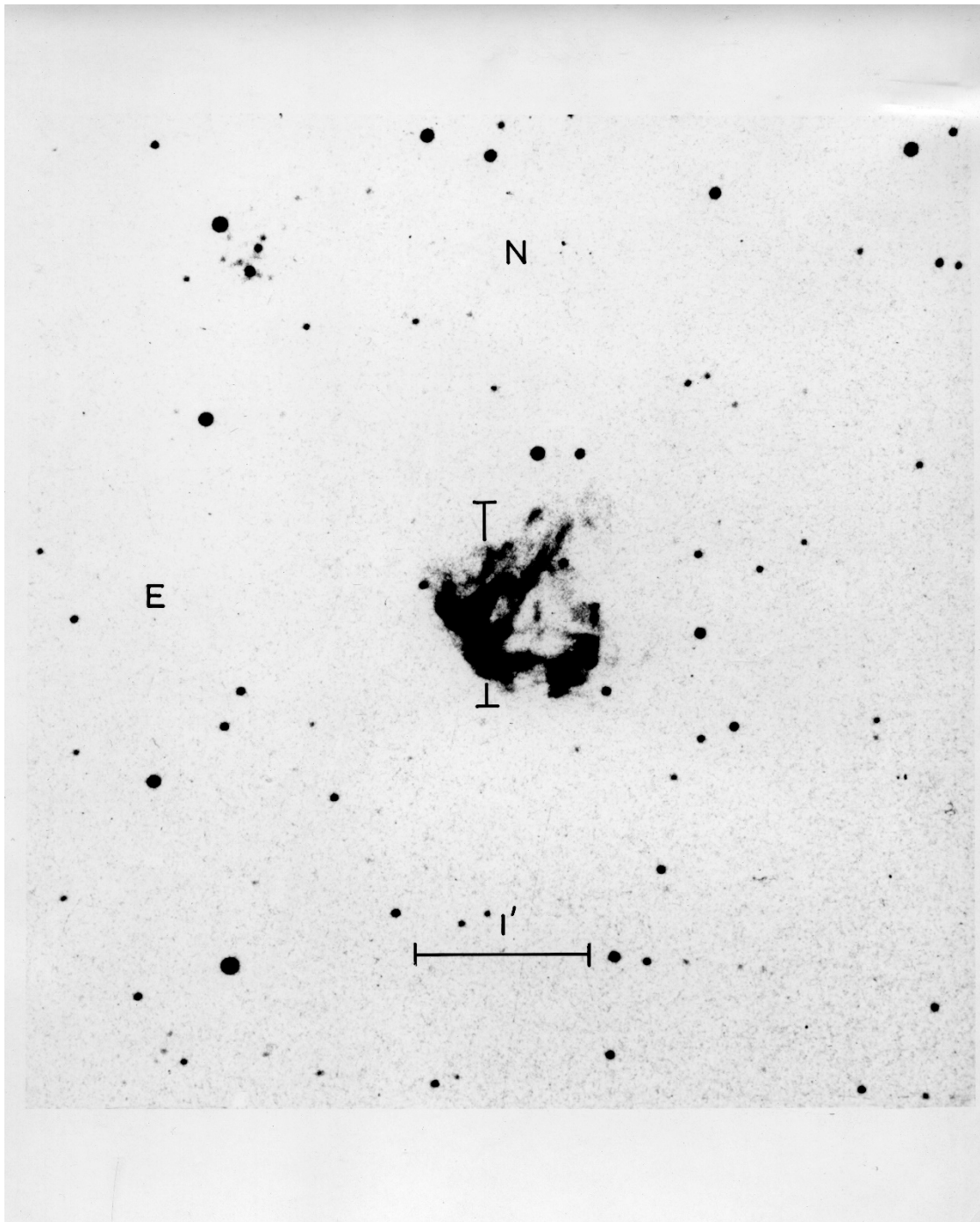


Radio Telescope Images Gathered by Higgs for *Radio Astronomy*
All images Image courtesy ANU Mt Stromlo and Siding Springs Observatory unless
otherwise noted



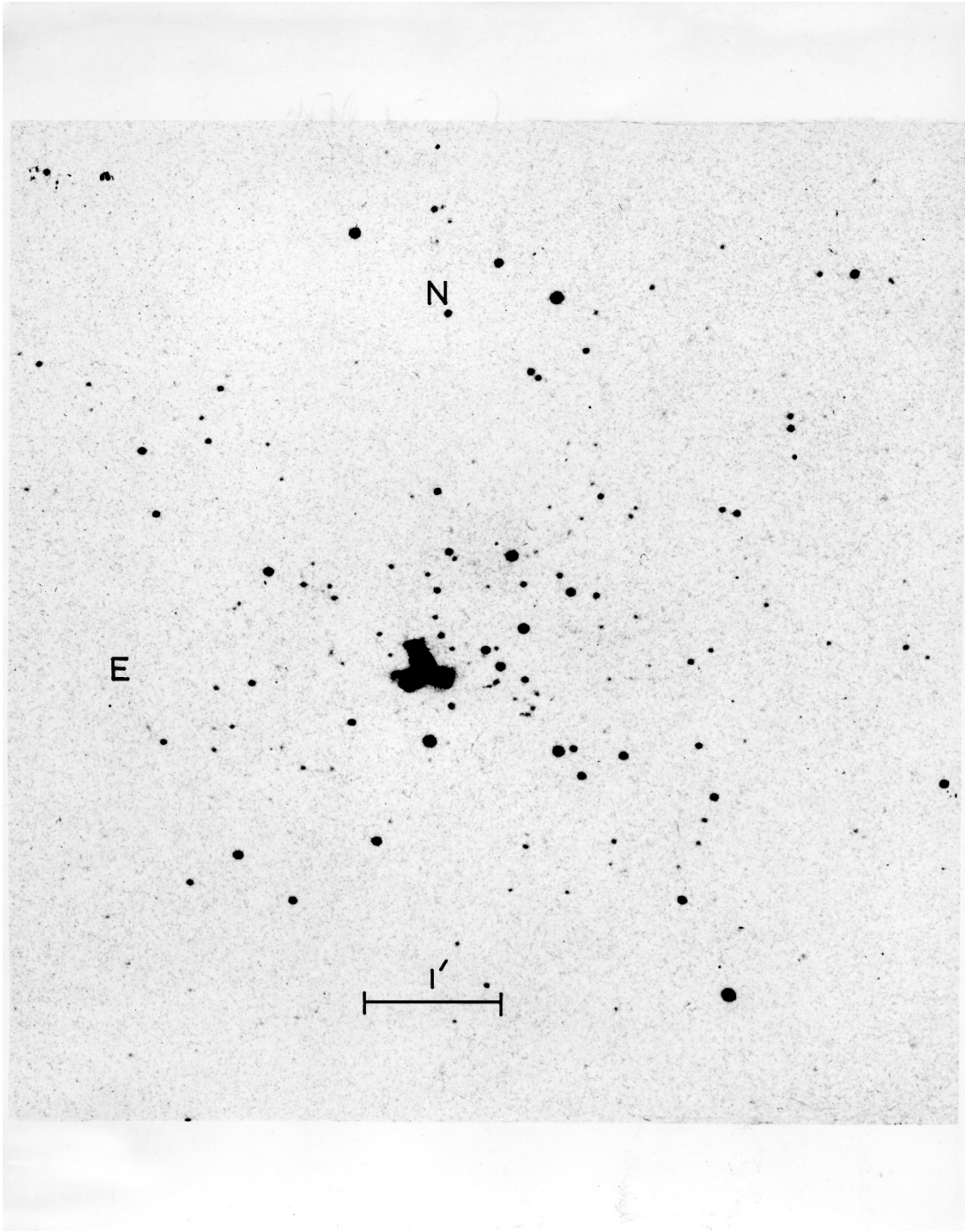
higgs_stromlo_01-flipped.jpg

Supernova remnant N 63A in the Large Magellanic Cloud (LMC). CSIRO Radiophysics ref 7508-1

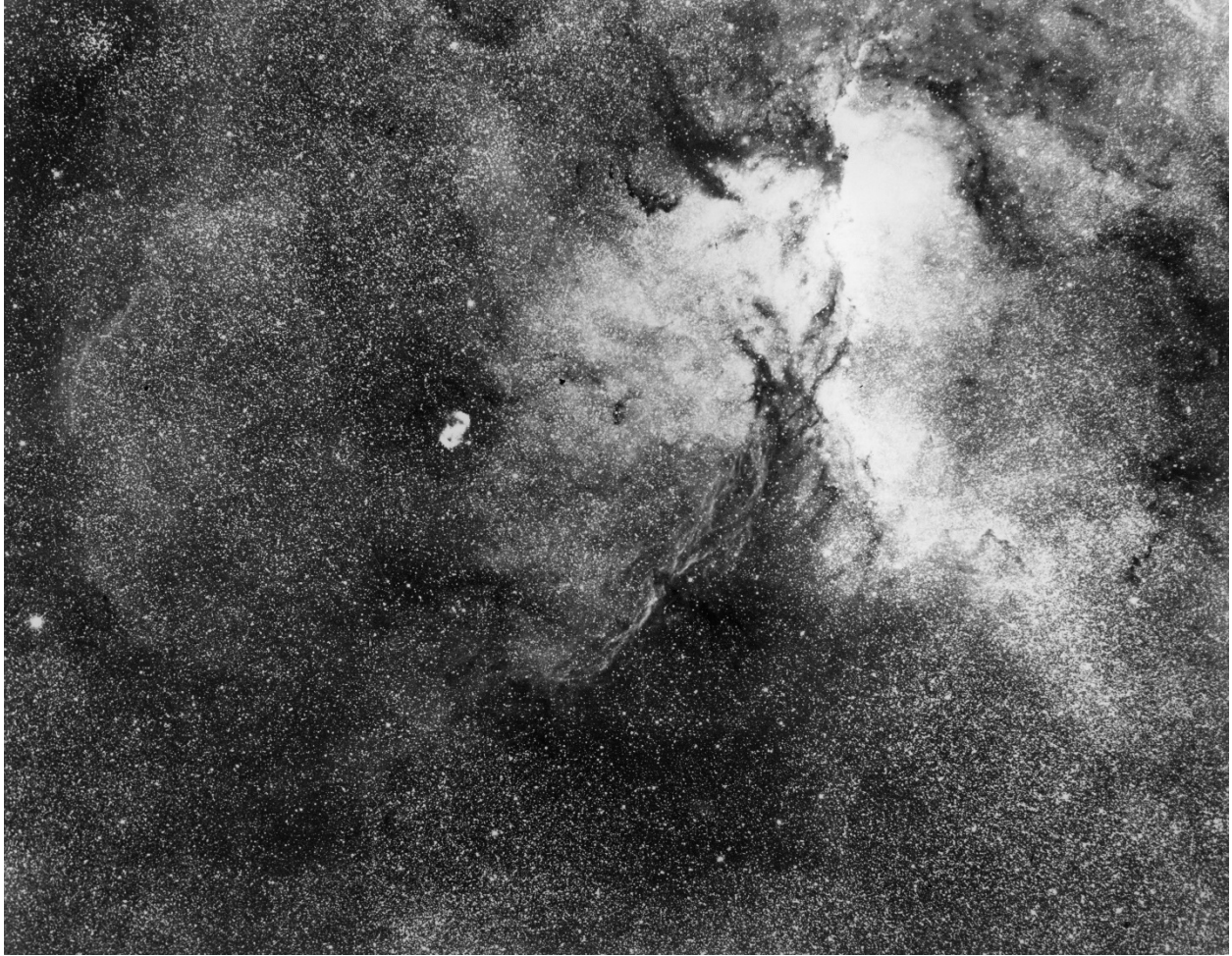


higgs_stromlo_02.jpg

N49, the first supernova remnant to be discovered in an external galaxy.

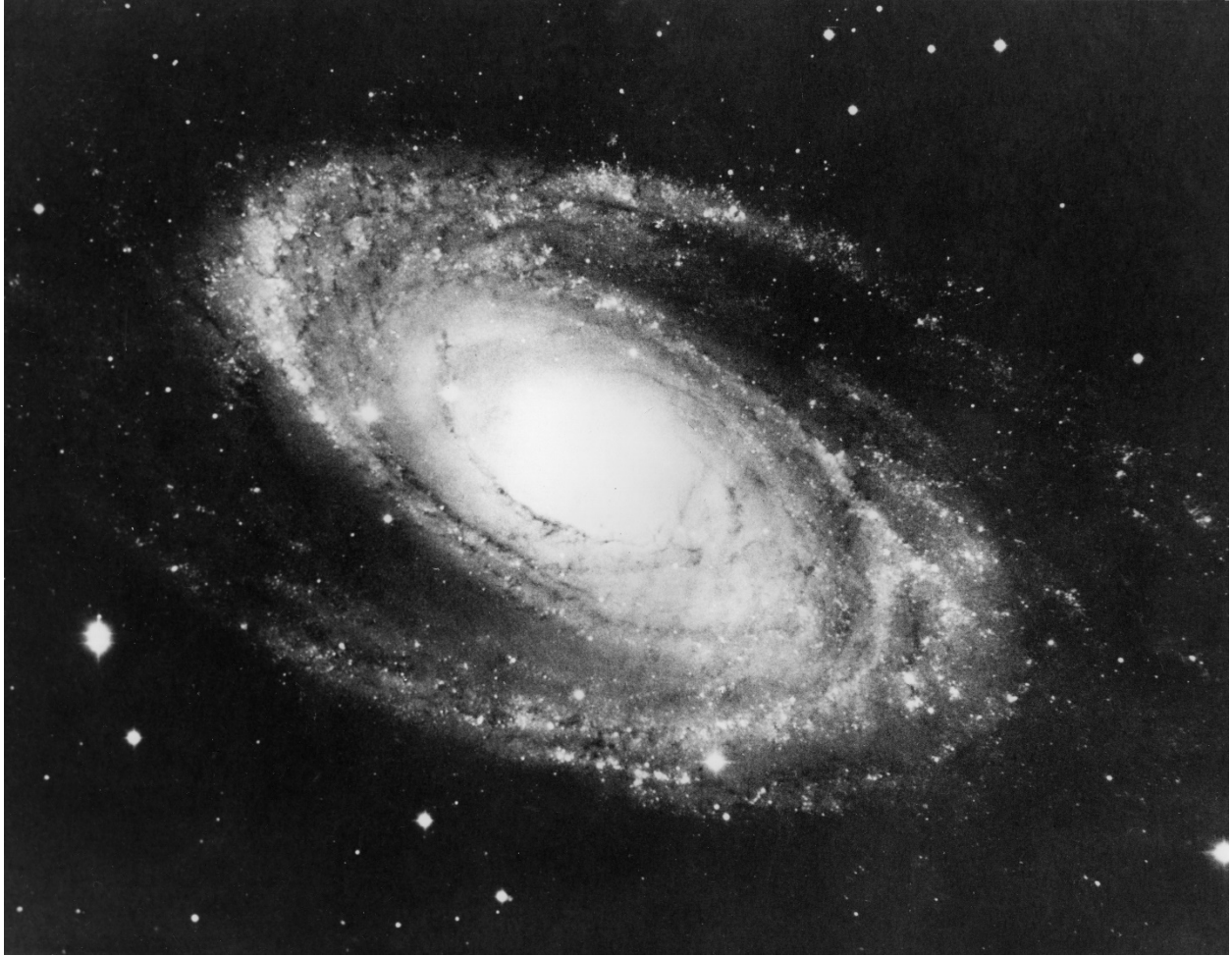


higgs_stromlo_03.jpg
Supernova remnant N 63A in the LMC.



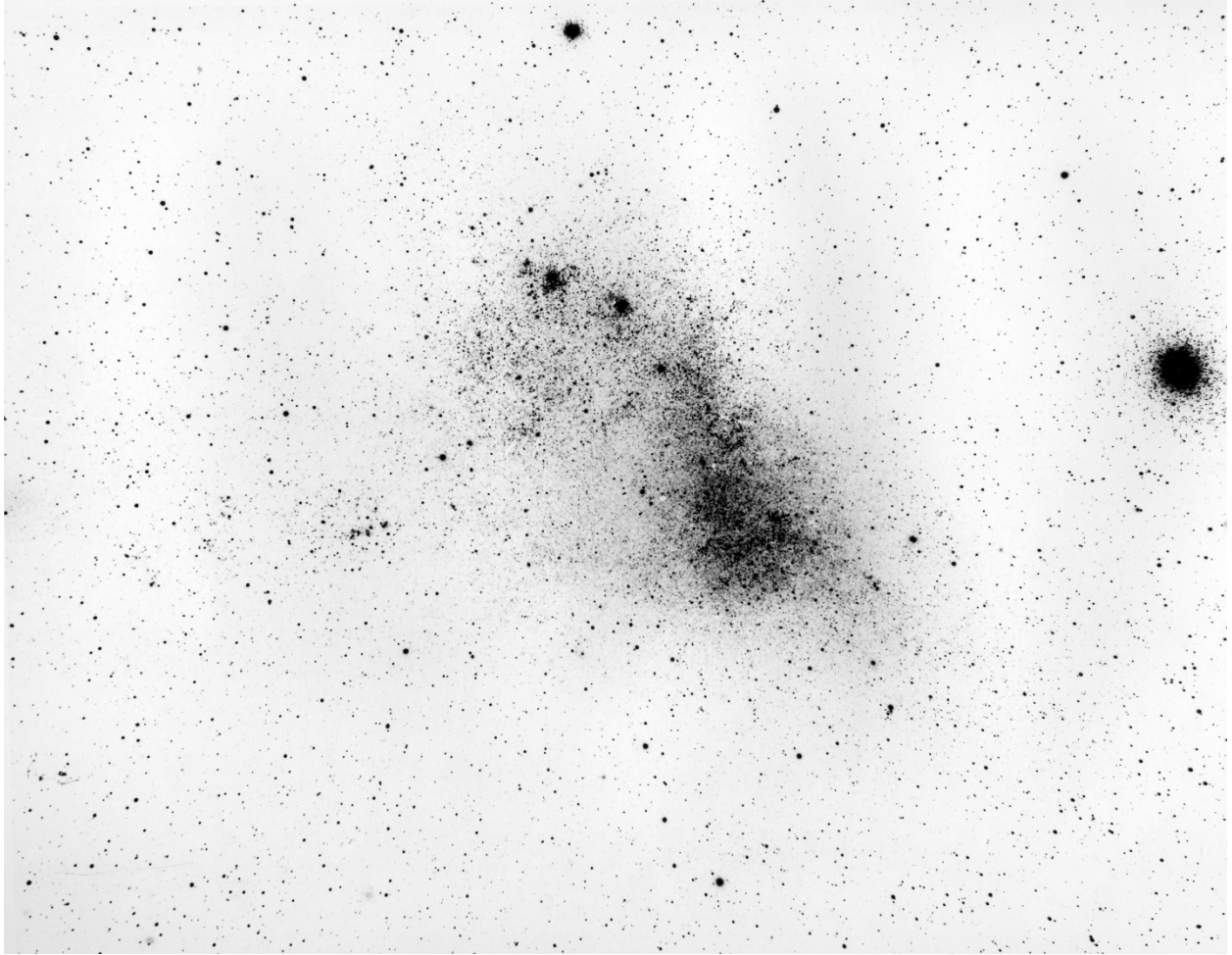
higgs_stromlo_04-rotated.jpg

The compact, bright nebula is NGC 6164-5, a nebular ejected from a hot star. The extended emission with dust lane is NGC 6188.



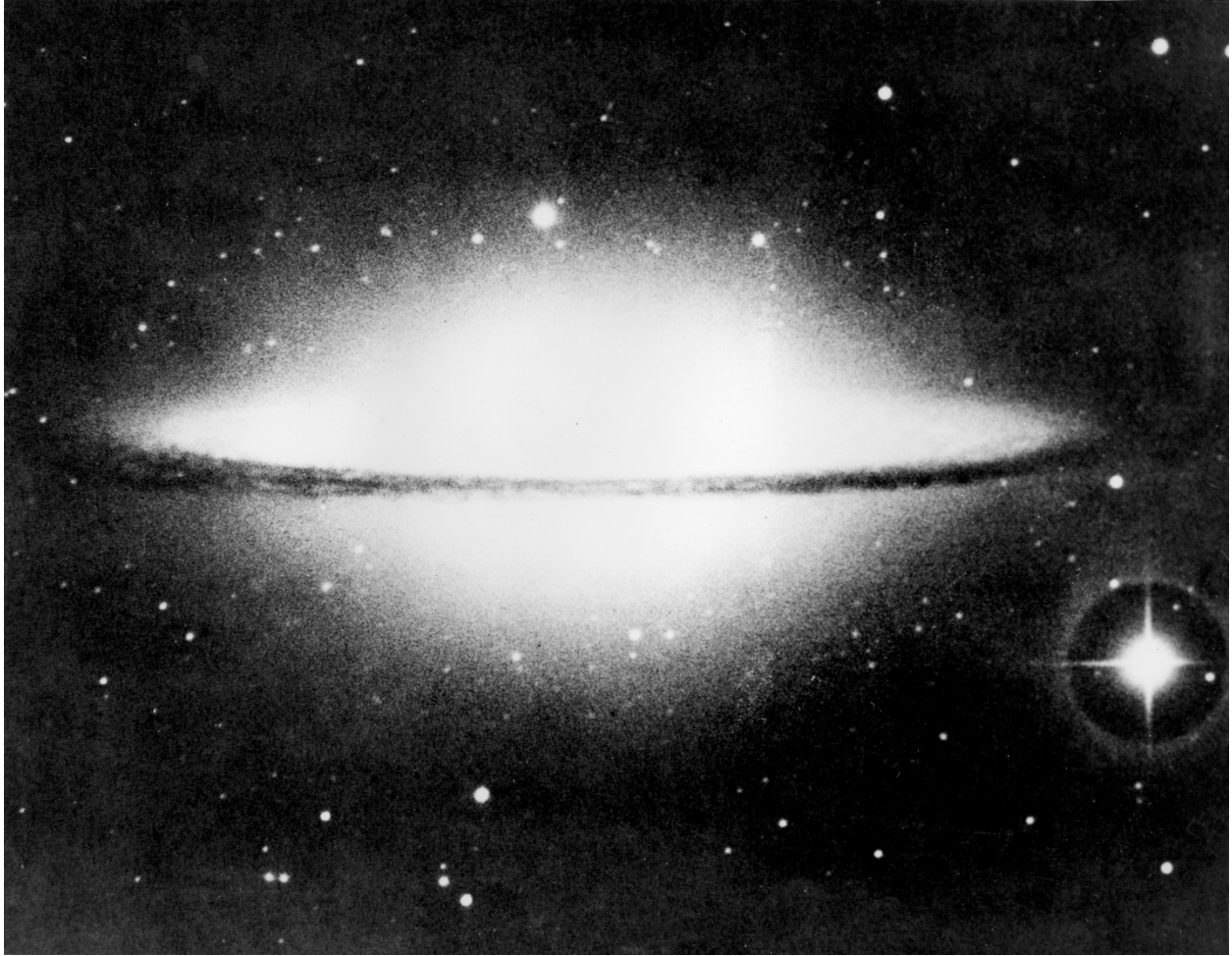
higgs_stromlo_05-rotated.jpg

Messier 81. Image courtesy ANU Mt Stromlo and Siding Springs Observatory, but source of image unknown



higgs_stromlo_06-flipped-rotated.jpg

The LMC and globular cluster 47 Tucanae.



higgs_stromlo_07.jpg

The Sombrero galaxy, M104, NGC4594, an edge-on spiral galaxy in Virgo.



higgs_stromlo_08.jpg

NGC 4755, the Jewel Box, an open cluster in Crux.



higgs_stromlo_09.jpg

NGC 55



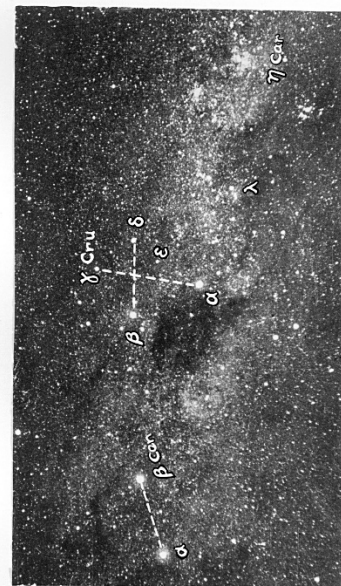
higgs_stromlo_10-rotated.jpg

NGC 3372, the Great Carina nebula.



higgs_stromlo_11.jpg

NGC 2070, the Tarantula nebula in the LMC.



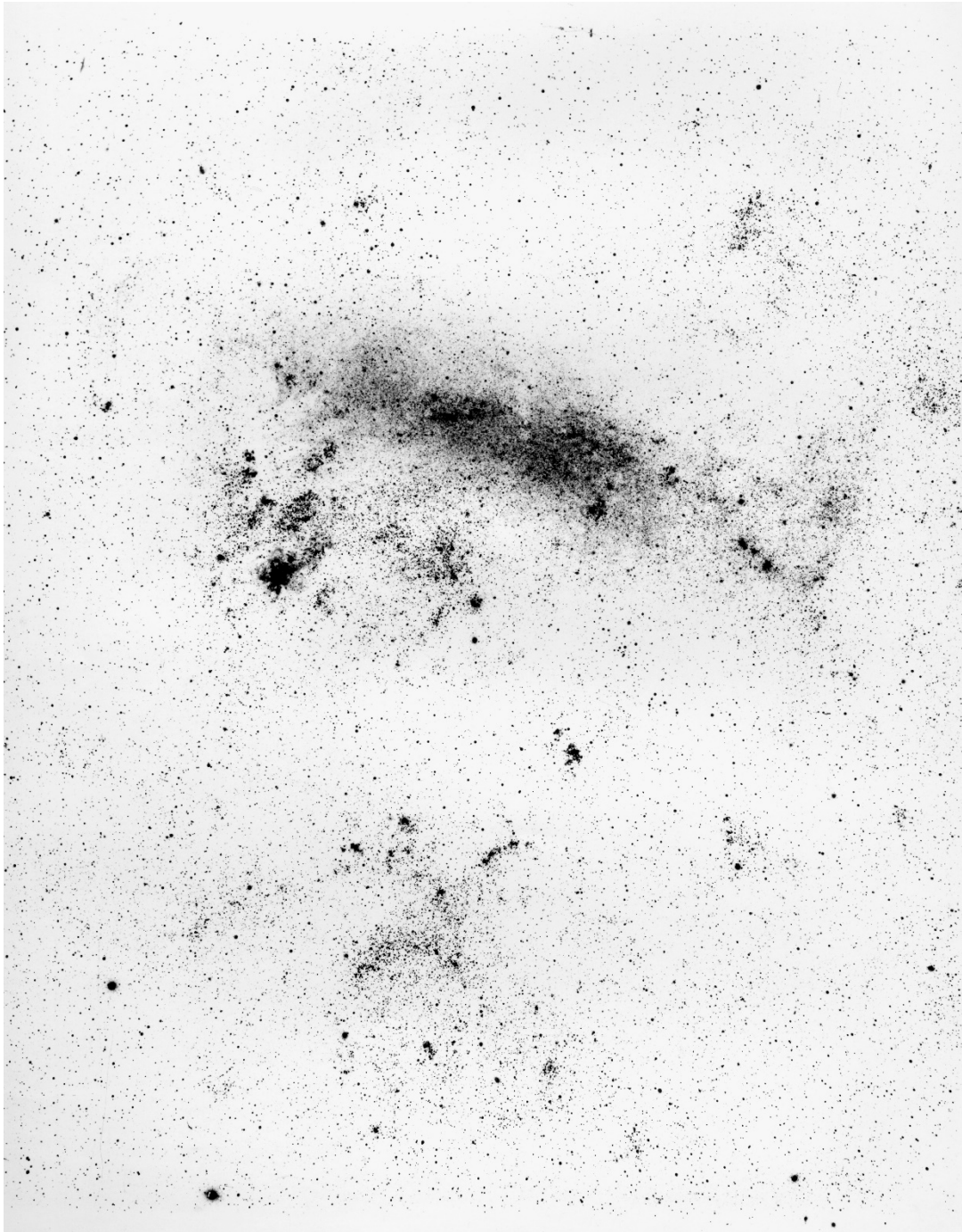
higgs_stromlo_12.jpg

Main image is a mosaic of the Milky Way, centred on the dark Coal Sack, and the Southern Cross. The Great Carina nebula is in the lower right-hand panel. The rectangular image is of the same field, at lower resolution, and with some major stars identified.



higgs_stromlo_13-rotated.jpg

NGC 104, the globular cluster 47 Tucanae.



higgs_stromlo_14.jpg

The Large Magellanic Cloud and clusters of hot stars associate with it.



higgs_stromlo_15.jpg

NGC 5128, Centaurus A, the nearest strong cosmic radio source.