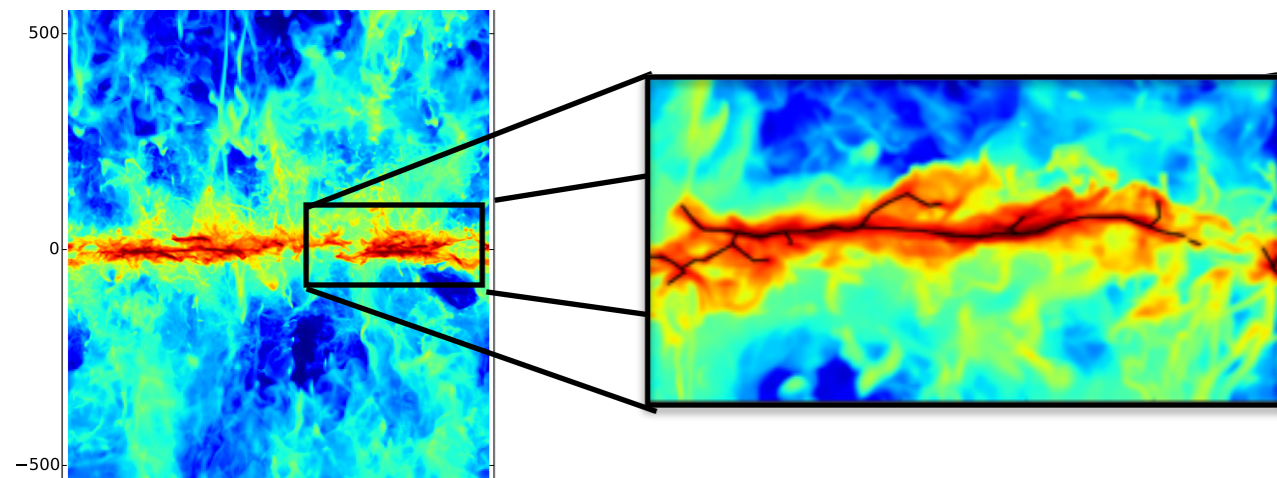
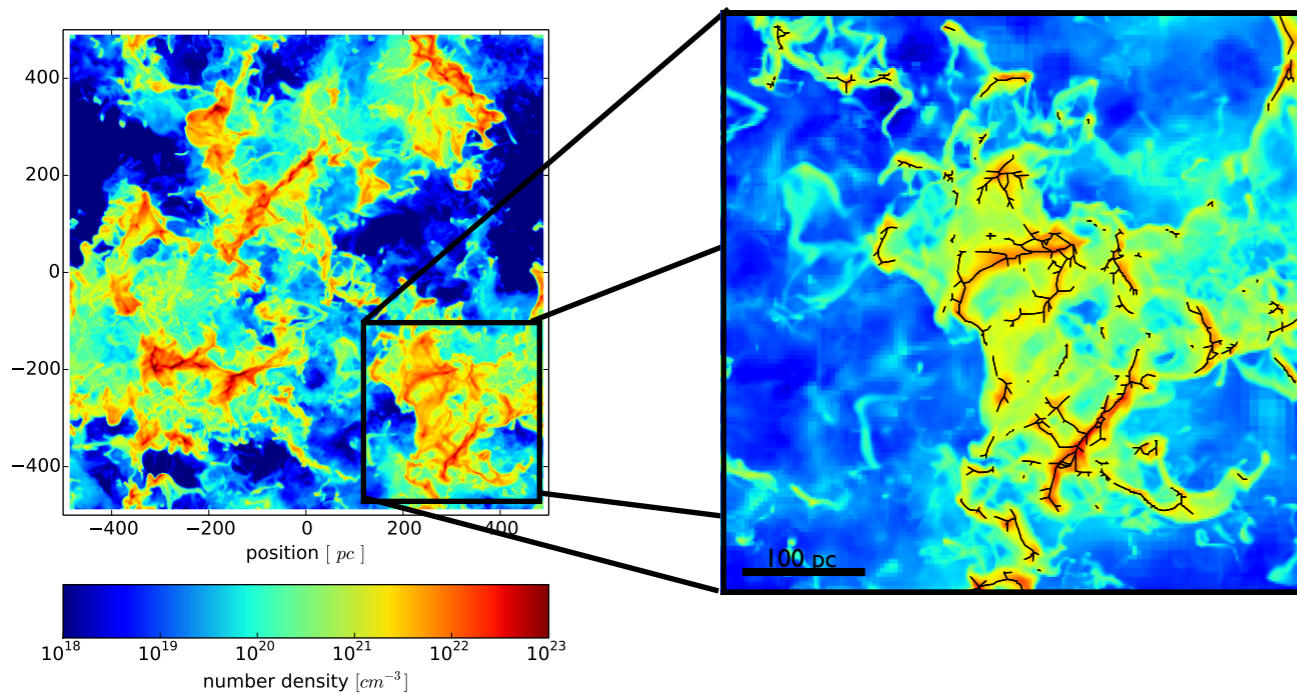


# Gas dynamics in filamentary cloud complexes

Juan C. Ibañez-Mejía Mordecai M. Mac Low, Ralf S. Klessen, Christian Bazcynski



- Turbulence produces a hierarchy of clumps down to the smallest scales resolved.
- Gravitational collapse proceeds quickly once gas turns self gravitating.
- the complex filamentary structure seen in the face on view, is only indistinctly recovered in the PPV maps.
- it is not evident the presence of ordered motions in the cloud's collapse.

## Simple mock PPV

