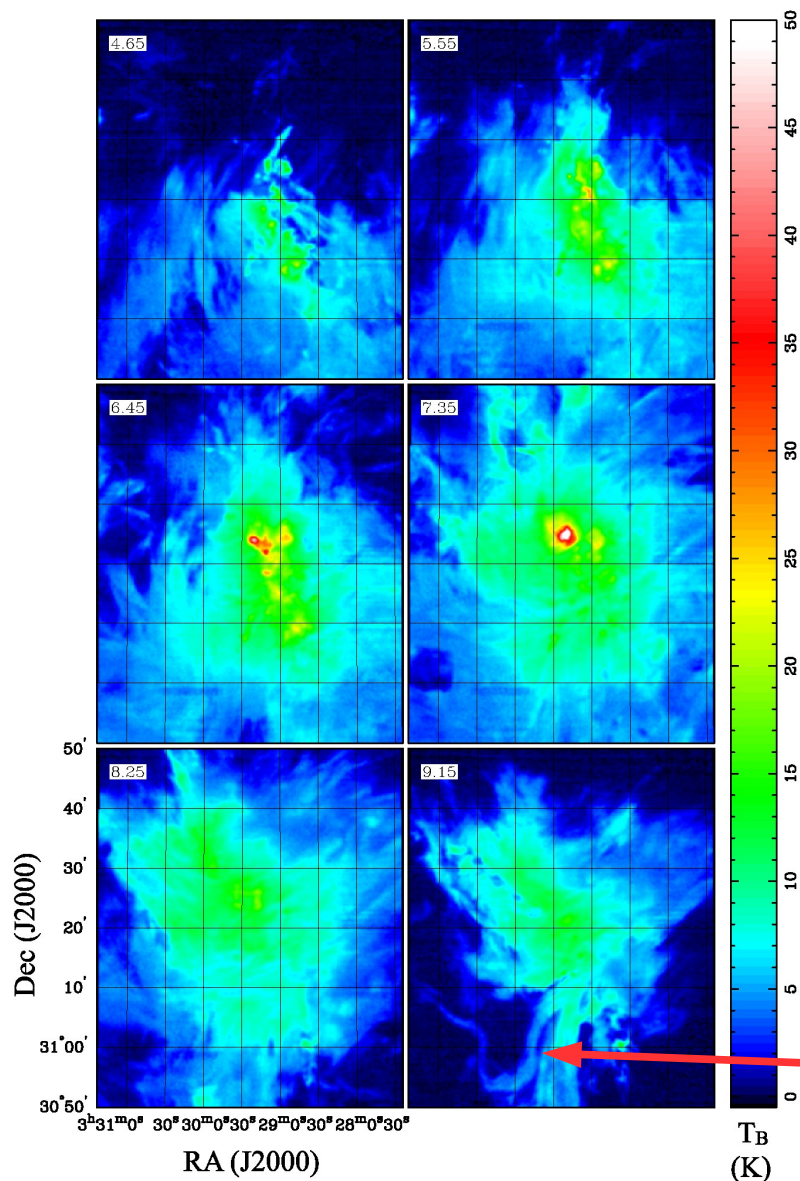


NGC 1333 in Perseus Cloud



Velocity channel maps for CO J=2-1 line, at 0.9 km/s intervals (0.3 km/s resolution). Note complex filamentary structure radiating from center of star formation activity.

Molecular cloud structure from deg.-scale maps of CO & ^{13}CO with Arizona's HHT

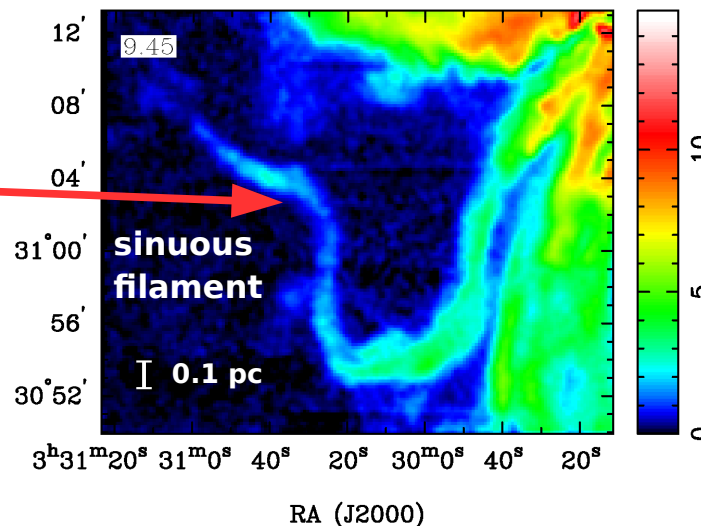
Sensitive fully sampled maps of J=2-1 and 3-2 lines

Poster includes examples from

- *Spitzer* c2d clouds: Serpens and NGC 1333
- forming low-mass clusters
- Giant Molec. Clouds: Cep A and Sh 235
- forming OB stars

Association of YSOs with velocity gradients, cloud structures—

- filaments, complex morphology
- effects of H II regions, bipolar outflows



Movies of cloud structure vs. radial velocity will be shown on demand !