



General Logistics



General - Contact

Organizing Committee:

- Pedro Beaklini
- Anna Kapinska
- Drew Medlin
- Juergen Ott
- Frank Schinzel

If you need to contact us, email is best:
vla-drw@nrao.edu

Attendance at this workshop implies consent to abide by our code of conduct: <https://go.nrao.edu/conduct>

Admin Support:

- Lori Appel
- Liz Lyons

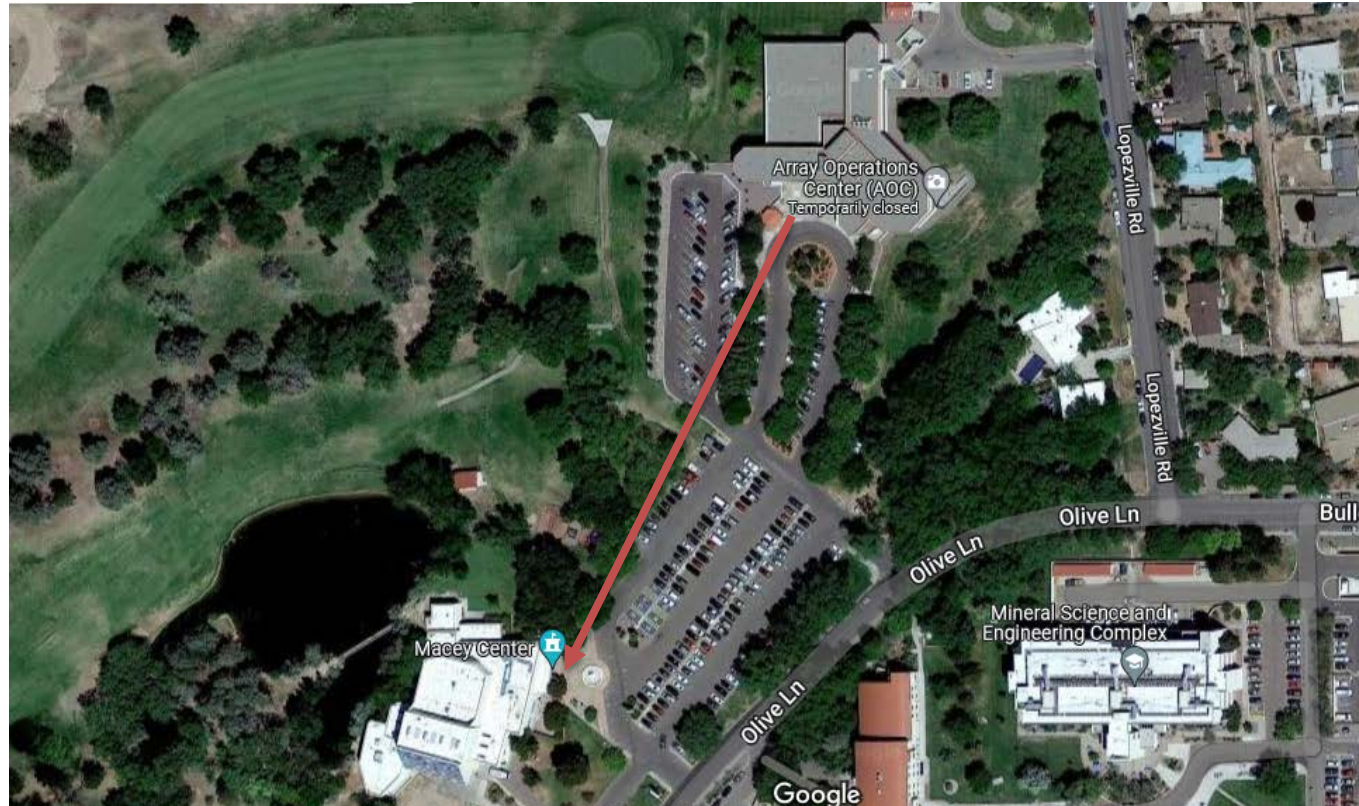
- Please always wear a mask while in the auditorium (exception only speaker) and take coffee break outside.
- If you think you need an antigen Covid test, please let us know and we can provide you with one.

Program / Lectures Highlights

<https://science.nrao.edu/science/meetings/2022/vla-data-reduction/program>

- We will broadcast all presentations via zoom webinar
- Presentations will be from October 11th – 14th
- Presented materials will be posted on program webpage
- Data Reduction Starts Wednesday afternoon
- Reception, today Tuesday evening 5-7 pm
- VLA Tour Monday, October 17th 9 am – 2:30 pm (from DSOC)

Reception tonight (5 – 7 pm) at Macey Center



VLA Tour

- Carpool sign-up sheets in the back
- Leave at 9:00 am on Monday, October 17th (about 1 hour drive), more details to be shared on Friday. Return around 2:30 pm
- We will have water and snack bars and you might want to take lunch.
- We recommend to bring: sunscreen, hat, sunglasses (although weather forecast right now is for possible rainy conditions)
- Closed shoes and long pants for climbing a VLA antenna

Computing

- Check that you can login to your workstation with the nm-#### account that you were provided (using your my.nrao.edu password)
- General computing information, see NRAO Computing Guide <https://info.nrao.edu/computing/guide>
- Specifically for batch processing: <https://info.nrao.edu/computing/guide/cluster-processing>
- Note, workstations share nodes. Computing intensive data reduction and imaging is recommended to be done through batch processing.



www.nrao.edu
science.nrao.edu
public.nrao.edu

*The National Radio Astronomy Observatory is a facility of the National Science Foundation
operated under cooperative agreement by Associated Universities, Inc.*