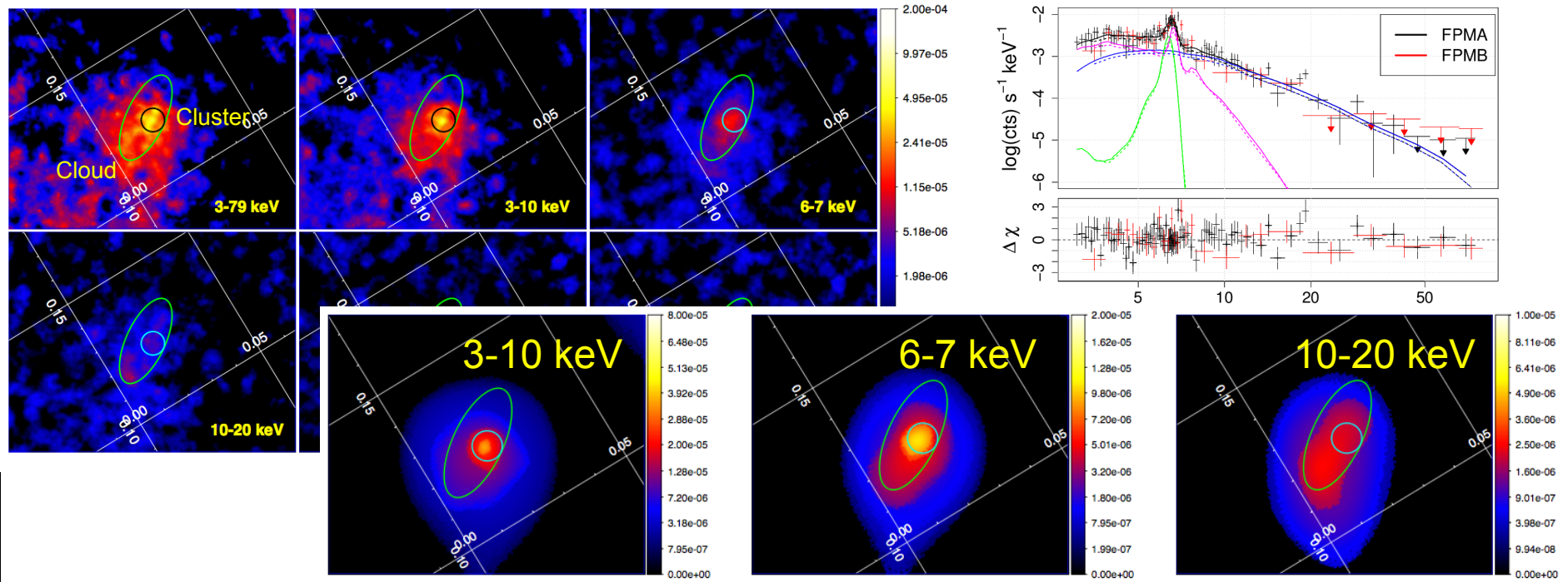


# NUSTAR

Nuclear Spectroscopic Telescope Array

## The Arches cluster morphology and spectral studies with NuSTAR (Poster 41)

The Arches cluster is detected above 10 keV for the first time.



The hard X-ray emission of the region surrounding the cluster is spatially consistent with the 6.4 keV line emission detected around the cluster core