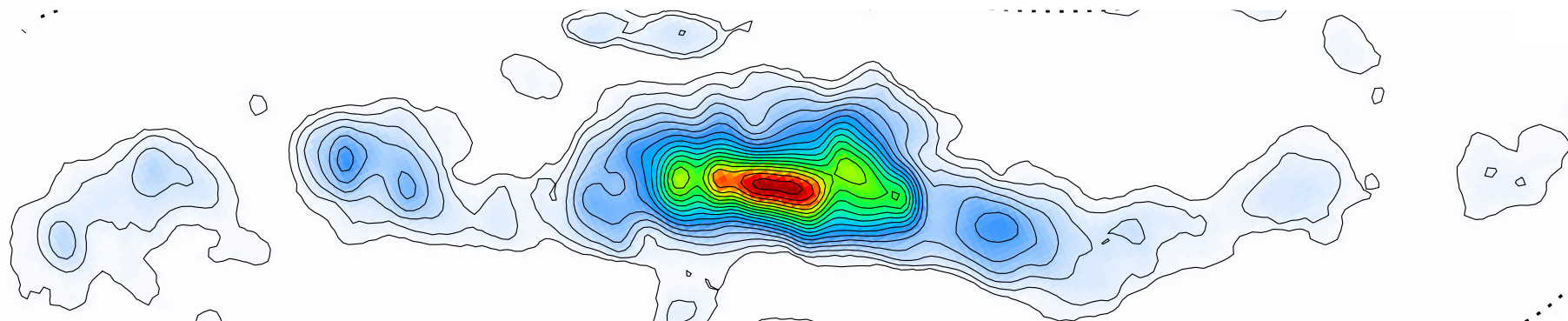
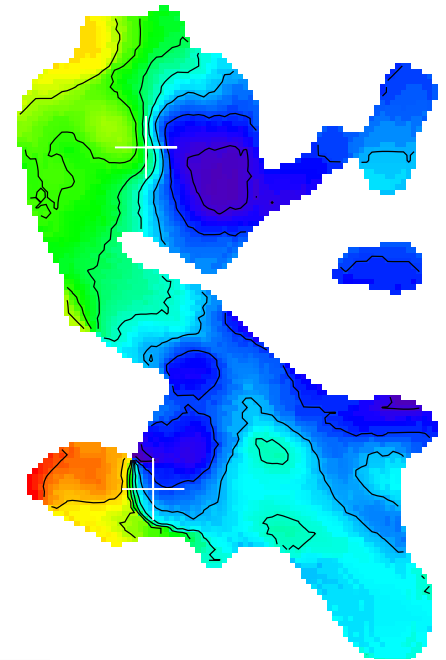
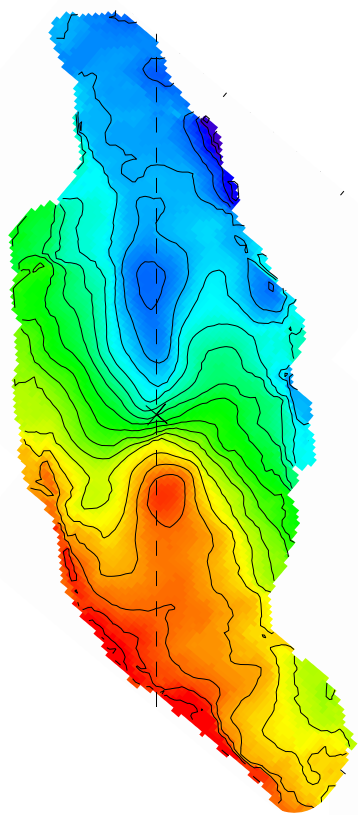


Kinematics and Dynamics of Molecular Gas in Galactic Centers

Kazushi Sakamoto (ASIAA)



Outline/Summary

- Bars and galaxy interactions, among others, drive cold gas to galactic centers and create CMZs
- Bar-driven gas dynamics also causes streamline convergence and cloud collisions, thereby induces active star formation
- Active star formation in turn affects the ISM in the forms of bubbles and outflows. i.e., S.F. feedback

Extragalactic examples are shown
from mm/submm observations

mainly from SMA, ALMA