

In[1]:= << nraadist.m

2012: GBT, VLA, and VLBA

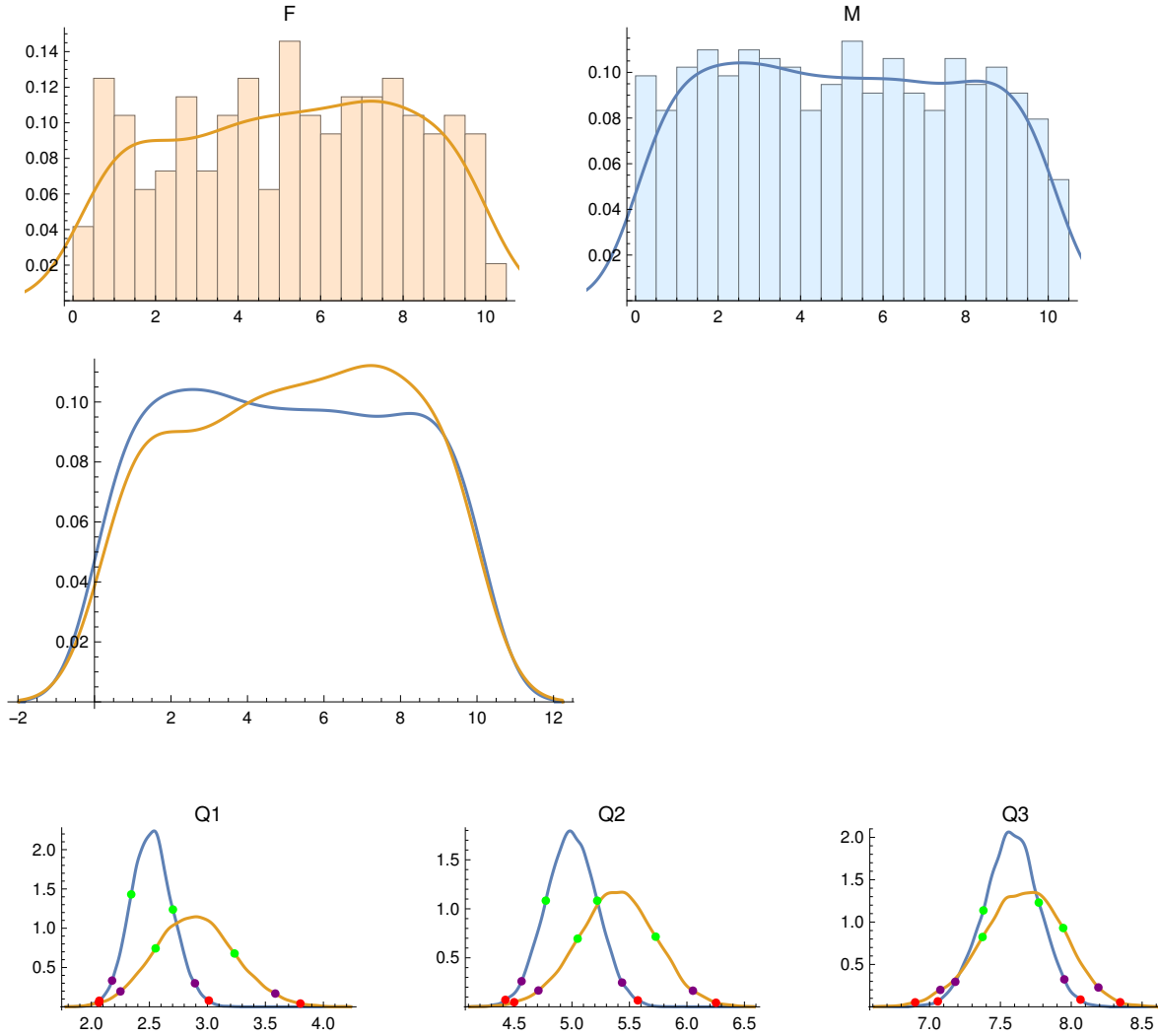
No. Female PIs = 192

No. Male PIs = 528

F PI Quartiles: {2.73, 5.39, 7.645}

M PI Quartiles: {2.5, 5., 7.6}

Anderson-Darling two-sample test p-value: 0.407944



## Male PIs:

	Quartile Score	68% CI	95% CI	99% CI
Quartile 1	2.5	2.343 2.703	2.178 2.893	2.068 3.012
Quartile 2	5.	4.773 5.22	4.562 5.436	4.421 5.573
Quartile 3	7.6	7.38 7.771	7.182 7.951	7.058 8.065

## Female PIs:

	Quartile Score	68% CI	95% CI	99% CI
Quartile 1	2.73	2.553 3.234	2.25 3.585	2.065 3.802
Quartile 2	5.39	5.049 5.728	4.709 6.052	4.498 6.253
Quartile 3	7.645	7.374 7.943	7.076 8.192	6.898 8.345

## Quartile differences, F minus M:

	diff.	upper/lower error bars
Quartile 1	0.23	0.3854 -0.3847
Quartile 2	0.39	0.4083 -0.4052
Quartile 3	0.045	0.3489 -0.3455

{}

2013: GBT, VLA, and VLBA

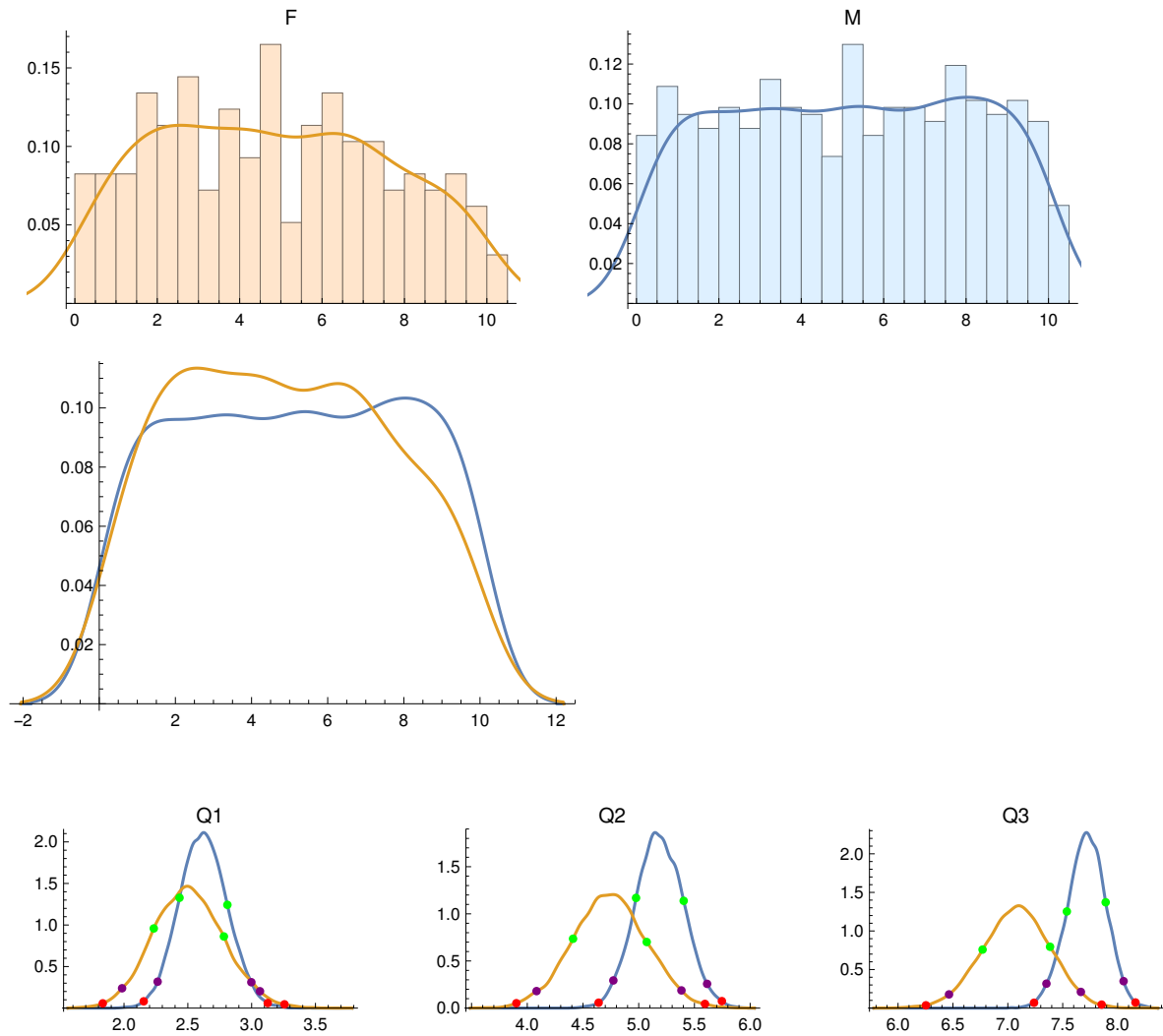
No. Female PIs = 194

No. Male PIs = 570

F PI Quartiles: {2.56, 4.675, 7.}

M PI Quartiles: {2.59, 5.2, 7.78}

Anderson-Darling two-sample test p-value: 0.177151



## Male PIs:

	Quartile Score	68% CI	95% CI	99% CI
Quartile 1	2.59	2.435 2.81	2.263 2.998	2.154 3.126
Quartile 2	5.2	4.976 5.404	4.772 5.614	4.64 5.746
Quartile 3	7.78	7.538 7.891	7.352 8.055	7.239 8.163

## Female PIs:

	Quartile Score	68% CI	95% CI	99% CI
Quartile 1	2.56	2.233 2.783	1.985 3.065	1.834 3.257
Quartile 2	4.675	4.411 5.072	4.083 5.383	3.902 5.595
Quartile 3	7.	6.77 7.385	6.464 7.665	6.254 7.855

## Quartile differences, F minus M:

	diff.	upper/lower error bars
Quartile 1	-0.03	0.3378 -0.3329
Quartile 2	-0.525	0.3909 -0.3936
Quartile 3	-0.78	0.3529 -0.3493

{}

2014: GBT, VLA, and VLBA

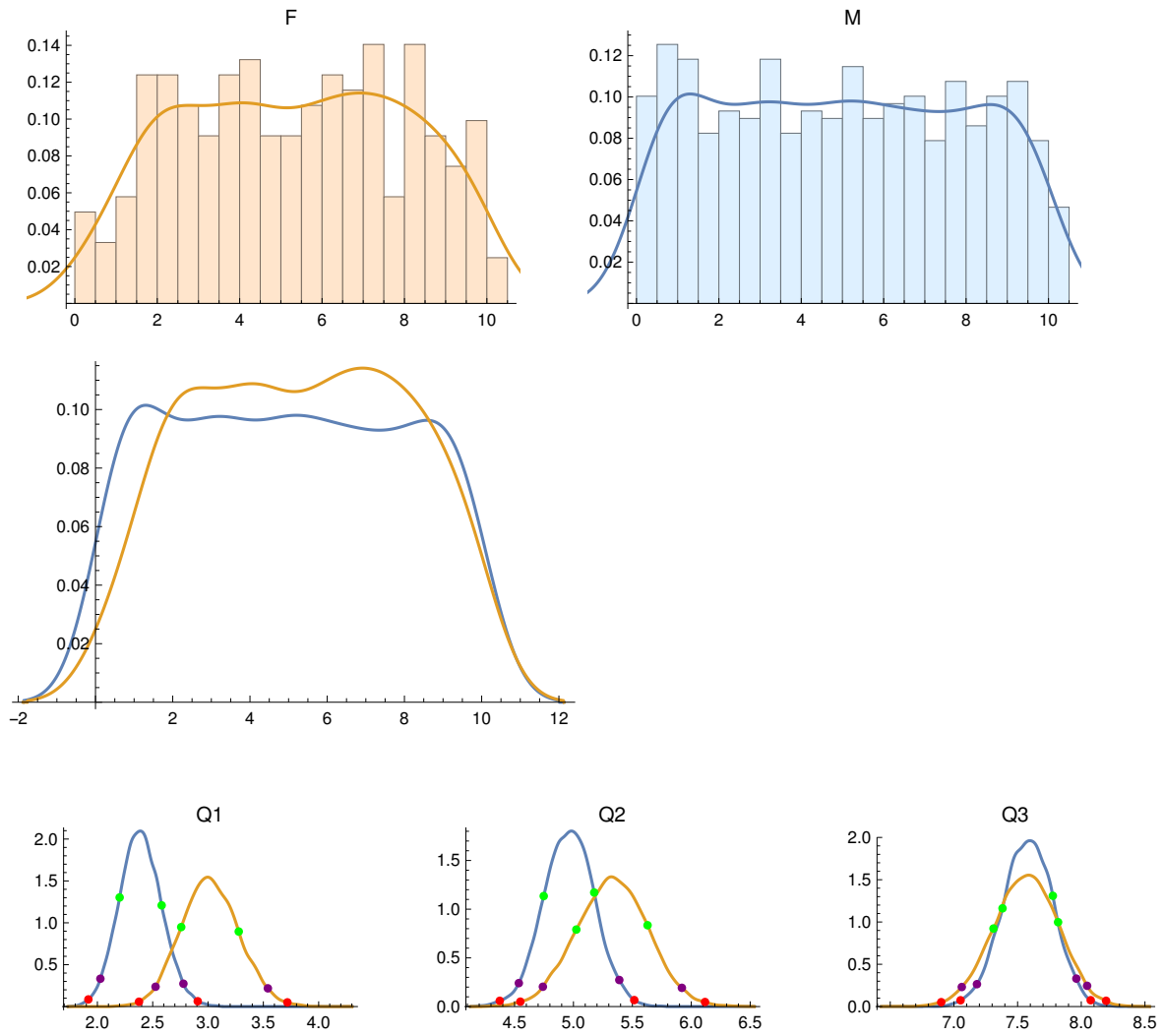
No. Female PIs = 242

No. Male PIs = 558

F PI Quartiles: {3., 5.4, 7.46}

M PI Quartiles: {2.4, 5., 7.6}

Anderson-Darling two-sample test p-value: 0.0472778



## Male PIs:

	Quartile Score	68% CI	95% CI	99% CI
Quartile 1	2.4	2.201 2.581	2.027 2.778	1.918 2.907
Quartile 2	5.	4.748 5.176	4.536 5.389	4.375 5.516
Quartile 3	7.6	7.382 7.777	7.181 7.962	7.052 8.074

## Female PIs:

	Quartile Score	68% CI	95% CI	99% CI
Quartile 1	3.	2.758 3.278	2.526 3.541	2.376 3.717
Quartile 2	5.4	5.025 5.629	4.741 5.92	4.549 6.117
Quartile 3	7.46	7.311 7.818	7.062 8.046	6.9 8.195

## Quartile differences, F minus M:

	diff.	upper/lower error bars
Quartile 1	0.6	0.3251 -0.3239
Quartile 2	0.4	0.3715 -0.3718
Quartile 3	-0.14	0.3207 -0.3187

{}

2015: GBT, VLA, and VLBA

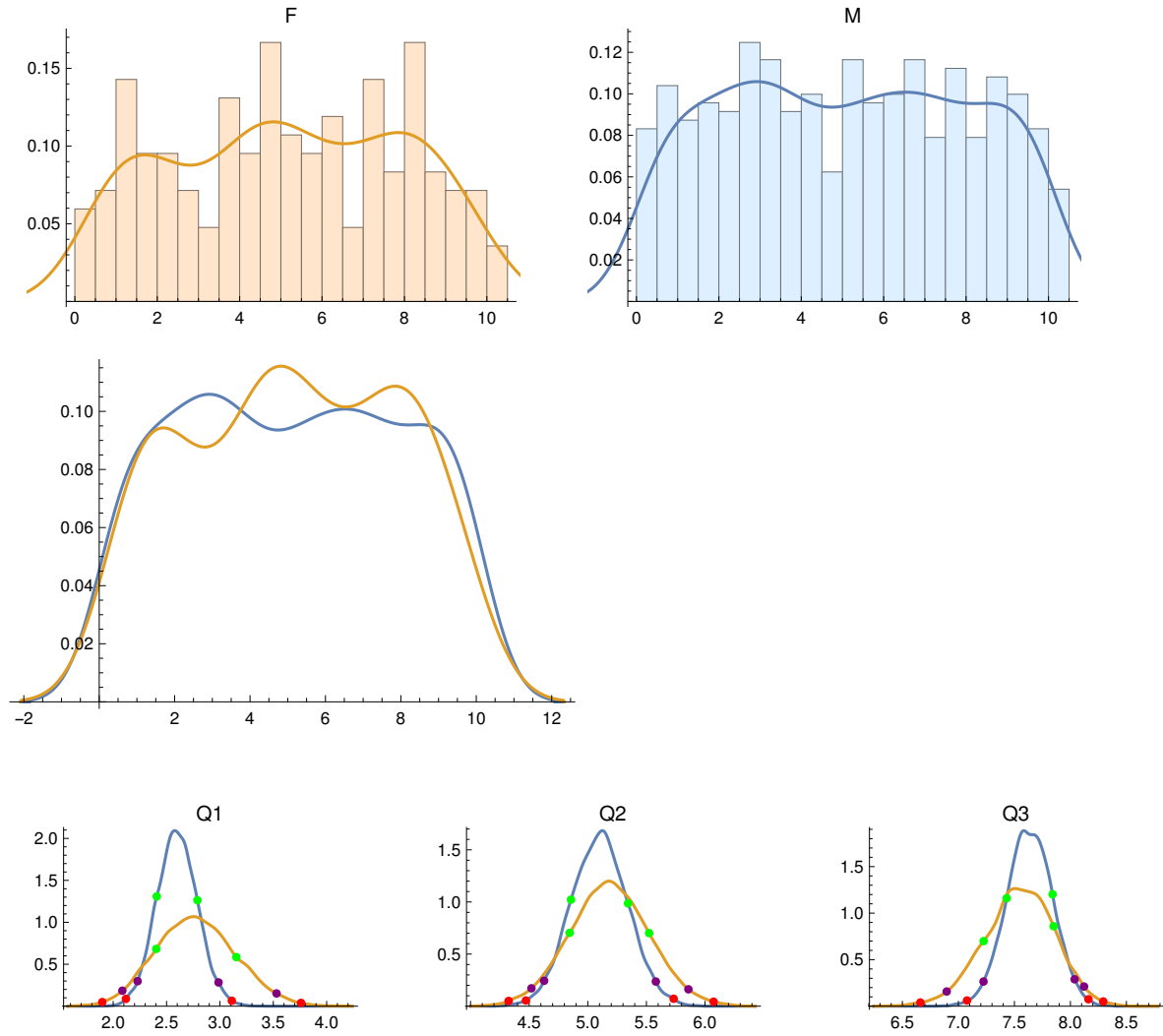
No. Female PIs = 168

No. Male PIs = 481

F PI Quartiles: {2.595, 5., 7.615}

M PI Quartiles: {2.665, 5.15, 7.6125}

Anderson-Darling two-sample test p-value: 0.671056



## Male PIs:

	Quartile Score	68% CI	95% CI	99% CI
Quartile 1	2.665	2.408 2.789	2.229 2.987	2.119 3.111
Quartile 2	5.15	4.857 5.343	4.628 5.58	4.472 5.732
Quartile 3	7.613	7.431 7.84	7.224 8.038	7.077 8.161

## Female PIs:

	Quartile Score	68% CI	95% CI	99% CI
Quartile 1	2.595	2.404 3.154	2.086 3.53	1.898 3.76
Quartile 2	5.	4.846 5.523	4.519 5.858	4.325 6.073
Quartile 3	7.615	7.225 7.851	6.896 8.122	6.66 8.293

## Quartile differences, F minus M:

	diff.	upper/lower error bars
Quartile 1	-0.07	0.4171 -0.417
Quartile 2	-0.15	0.4175 -0.4184
Quartile 3	0.0025	0.3738 -0.3718

{}



2016: GBT, VLA, and VLBA

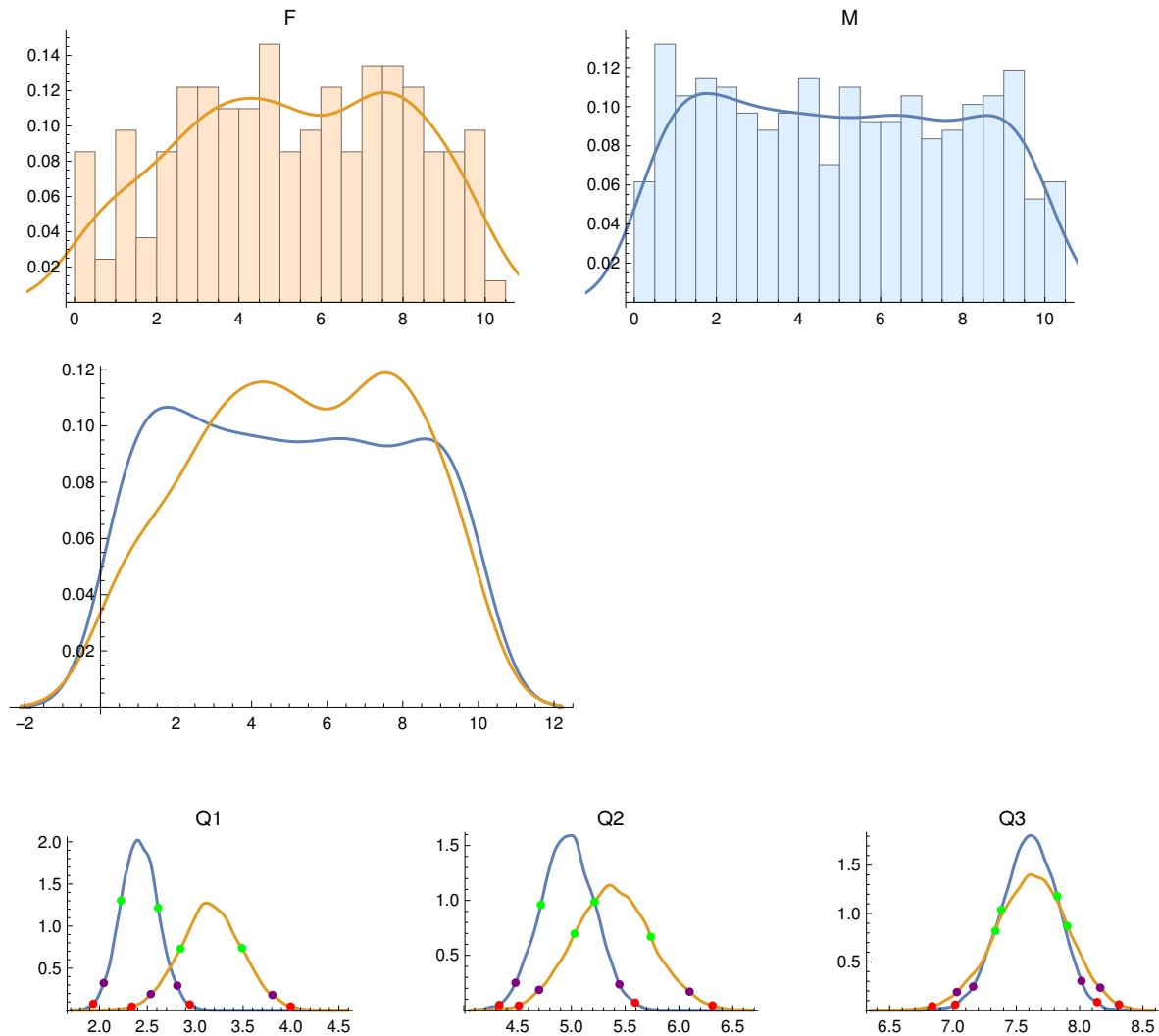
No. Female PIs = 164

No. Male PIs = 455

F PI Quartiles: {3.245, 5.38, 7.58}

M PI Quartiles: {2.385, 5., 7.6125}

Anderson-Darling two-sample test p-value: 0.125781



## Male PIs:

	Quartile Score	68% CI	95% CI	99% CI
Quartile 1	2.385	2.226 2.613	2.045 2.814	1.936 2.944
Quartile 2	5.	4.717 5.215	4.481 5.446	4.33 5.592
Quartile 3	7.612	7.38 7.824	7.159 8.015	7.018 8.139

## Female PIs:

	Quartile Score	68% CI	95% CI	99% CI
Quartile 1	3.245	2.846 3.488	2.536 3.806	2.339 3.997
Quartile 2	5.38	5.029 5.738	4.7 6.099	4.512 6.312
Quartile 3	7.58	7.334 7.903	7.031 8.163	6.836 8.31

## Quartile differences, F minus M:

	diff.	upper/lower error bars
Quartile 1	0.86	0.374 -0.3756
Quartile 2	0.38	0.4336 -0.4422
Quartile 3	-0.0325	0.3614 -0.3654

{}

All Years, 2012-2016: GBT, VLA, and VLBA

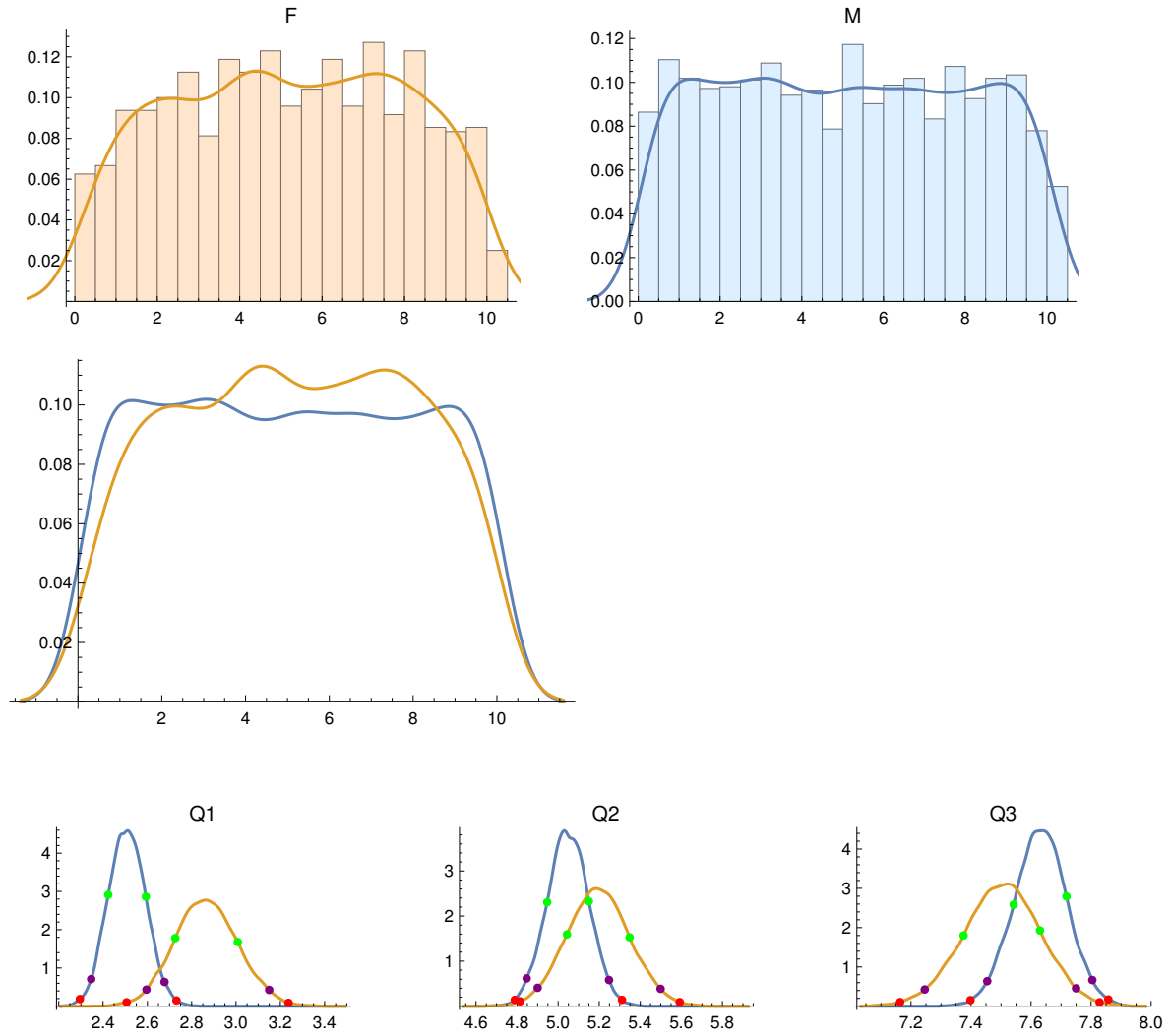
No. Female PIs = 960

No. Male PIs = 2592

F PI Quartiles: {2.775, 5.195, 7.46}

M PI Quartiles: {2.5, 5.085, 7.625}

Anderson-Darling two-sample test p-value: 0.0167233



## Male PIs:

	Quartile Score	68% CI	95% CI	99% CI
Quartile 1	2.5	2.423 2.593	2.346 2.677	2.295 2.731
Quartile 2	5.085	4.946 5.15	4.847 5.248	4.789 5.311
Quartile 3	7.625	7.542 7.718	7.454 7.804	7.398 7.858

## Female PIs:

	Quartile Score	68% CI	95% CI	99% CI
Quartile 1	2.775	2.726 3.008	2.596 3.15	2.506 3.237
Quartile 2	5.195	5.043 5.348	4.9 5.499	4.814 5.592
Quartile 3	7.46	7.375 7.63	7.246 7.75	7.164 7.828

## Quartile differences, F minus M:

	diff.	upper/lower error bars
Quartile 1	0.275	0.1649 -0.1647
Quartile 2	0.11	0.1818 -0.1827
Quartile 3	-0.165	0.1541 -0.1553

{}

2012: VLA only

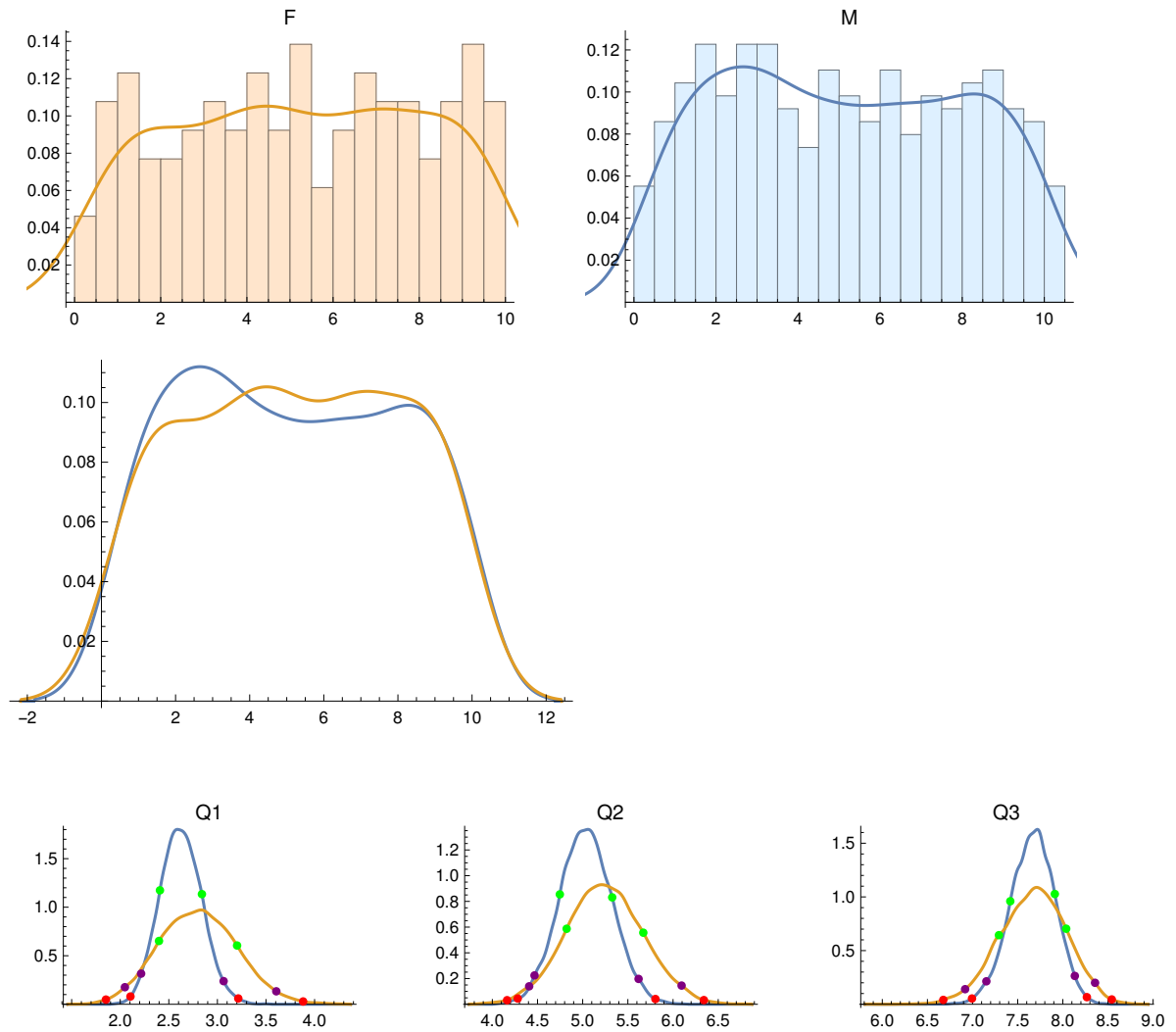
No. Female PIs = 130

No. Male PIs = 326

F PI Quartiles: {2.73, 5.11, 7.5}

M PI Quartiles: {2.61, 5., 7.73}

Anderson-Darling two-sample test p-value: 0.815216



## Male PIs:

	Quartile Score	68% CI	95% CI	99% CI
Quartile 1	2.61	2.409 2.841	2.215 3.064	2.105 3.215
Quartile 2	5.	4.747 5.327	4.467 5.618	4.281 5.805
Quartile 3	7.73	7.418 7.911	7.153 8.133	6.994 8.266

## Female PIs:

	Quartile Score	68% CI	95% CI	99% CI
Quartile 1	2.73	2.399 3.202	2.048 3.606	1.853 3.882
Quartile 2	5.11	4.823 5.671	4.408 6.095	4.163 6.341
Quartile 3	7.5	7.292 8.037	6.918 8.357	6.676 8.542

## Quartile differences, F minus M:

	diff.	upper/lower error bars
Quartile 1	0.12	0.4517 -0.4571
Quartile 2	0.11	0.5227 -0.5168
Quartile 3	-0.23	0.4428 -0.4443

{}

2013: VLA only

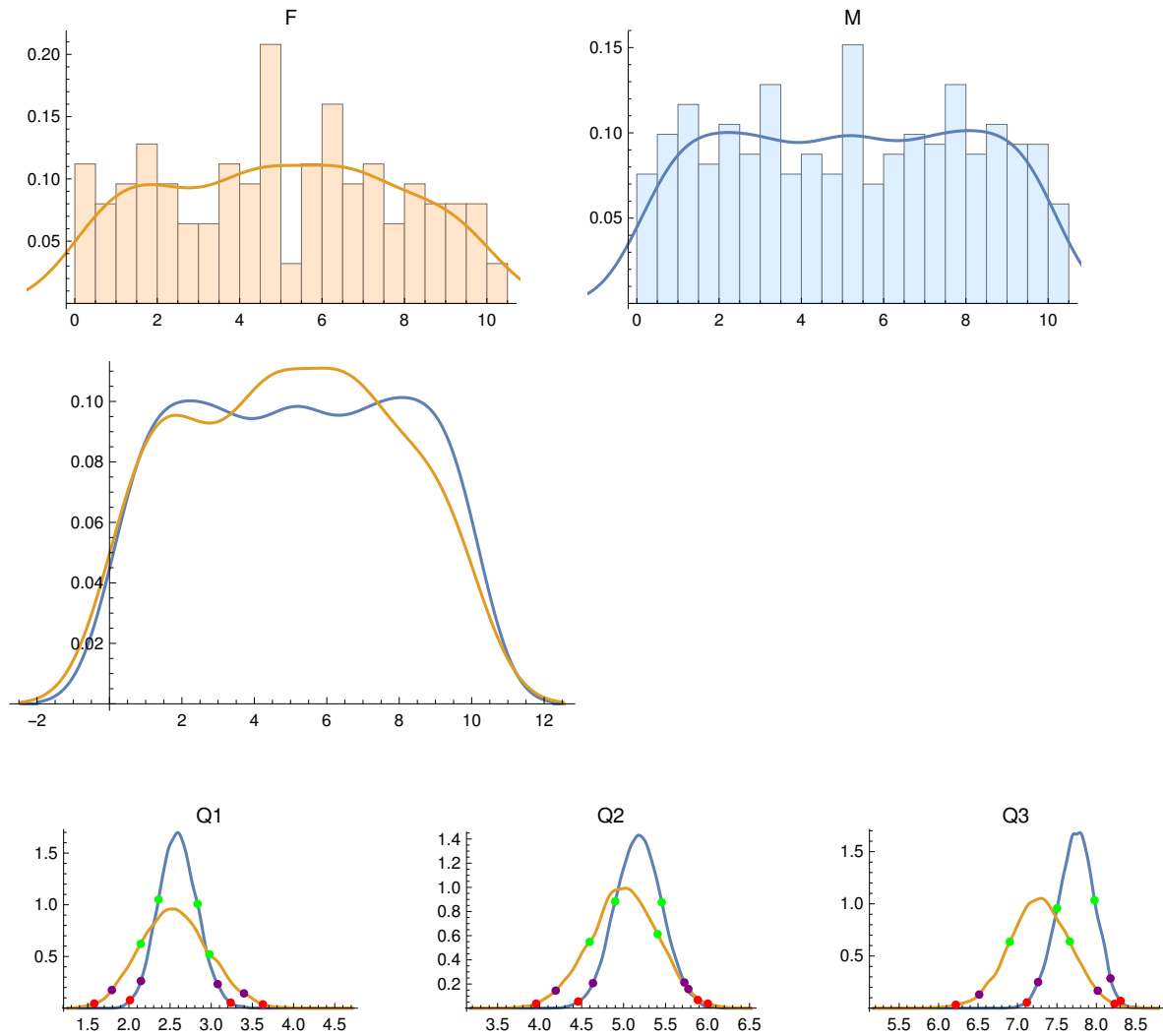
No. Female PIs = 125

No. Male PIs = 343

F PI Quartiles: {2.3375, 4.72, 7.175}

M PI Quartiles: {2.5525, 5.15, 7.8225}

Anderson-Darling two-sample test p-value: 0.700845



## Male PIs:

	Quartile Score	68% CI	95% CI	99% CI
Quartile 1	2.552	2.36 2.834	2.146 3.079	2.013 3.236
Quartile 2	5.15	4.9 5.456	4.635 5.724	4.459 5.884
Quartile 3	7.822	7.502 7.977	7.261 8.178	7.119 8.307

## Female PIs:

	Quartile Score	68% CI	95% CI	99% CI
Quartile 1	2.338	2.142 2.979	1.793 3.398	1.579 3.627
Quartile 2	4.72	4.596 5.406	4.191 5.771	3.959 6.004
Quartile 3	7.175	6.902 7.663	6.515 8.017	6.218 8.23

## Quartile differences, F minus M:

	diff.	upper/lower error bars
Quartile 1	-0.215	0.4681 -0.4786
Quartile 2	-0.43	0.4905 -0.4886
Quartile 3	-0.6475	0.4418 -0.4382

{}



2014: VLA only

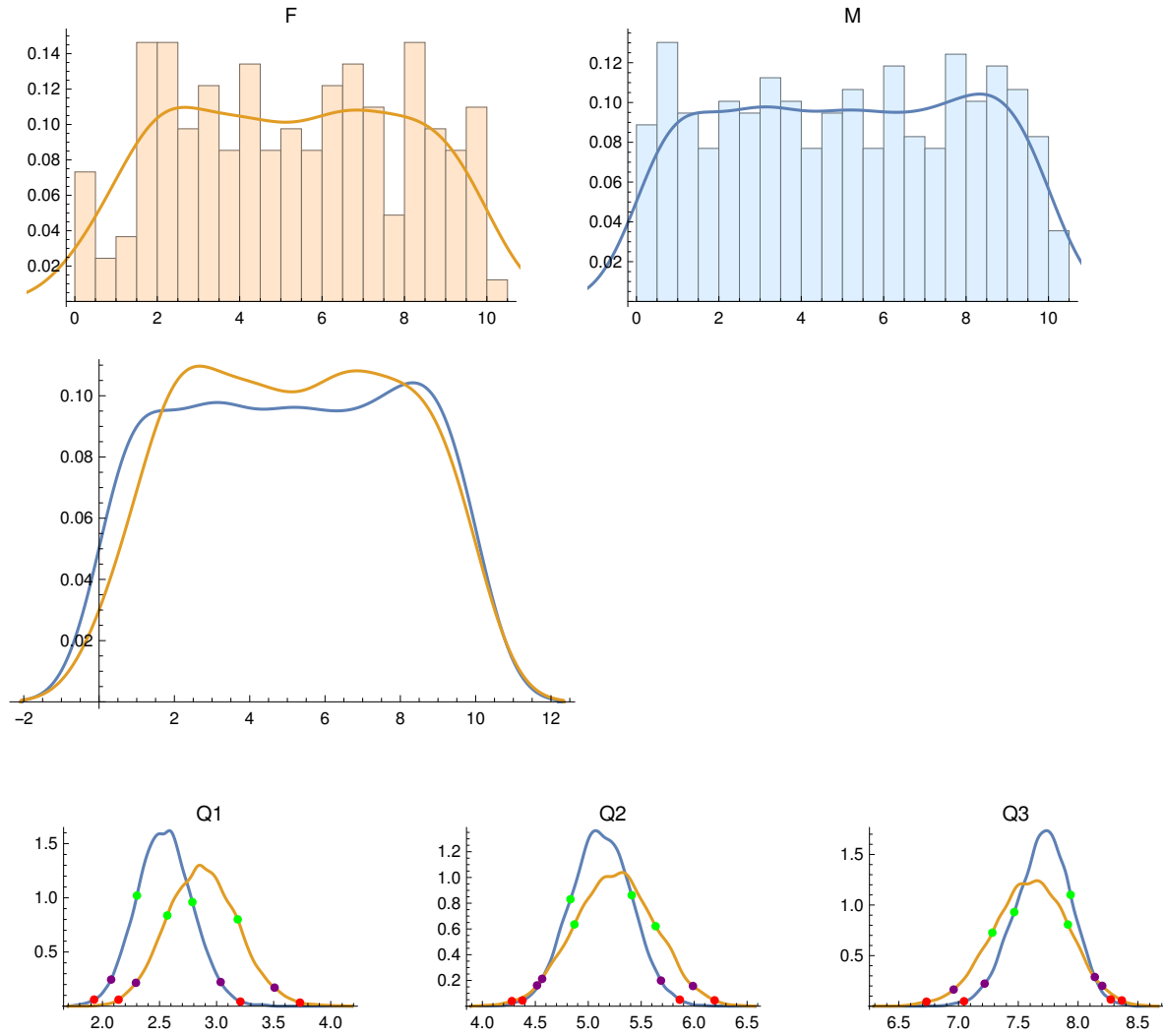
No. Female PIs = 164

No. Male PIs = 338

F PI Quartiles: {2.745, 5.345, 7.53}

M PI Quartiles: {2.6, 5.11, 7.69}

Anderson-Darling two-sample test p-value: 0.503132



## Male PIs:

	Quartile Score	68% CI	95% CI	99% CI
Quartile 1	2.6	2.302 2.788	2.076 3.036	1.927 3.209
Quartile 2	5.11	4.832 5.41	4.564 5.687	4.378 5.864
Quartile 3	7.69	7.466 7.938	7.218 8.14	7.046 8.274

## Female PIs:

	Quartile Score	68% CI	95% CI	99% CI
Quartile 1	2.745	2.568 3.185	2.293 3.508	2.141 3.731
Quartile 2	5.345	4.869 5.636	4.516 5.989	4.279 6.193
Quartile 3	7.53	7.283 7.915	6.959 8.202	6.732 8.366

## Quartile differences, F minus M:

	diff.	upper/lower error bars
Quartile 1	0.145	0.3918 -0.3974
Quartile 2	0.235	0.4722 -0.4749
Quartile 3	-0.16	0.3947 -0.398

{}

2015: VLA only

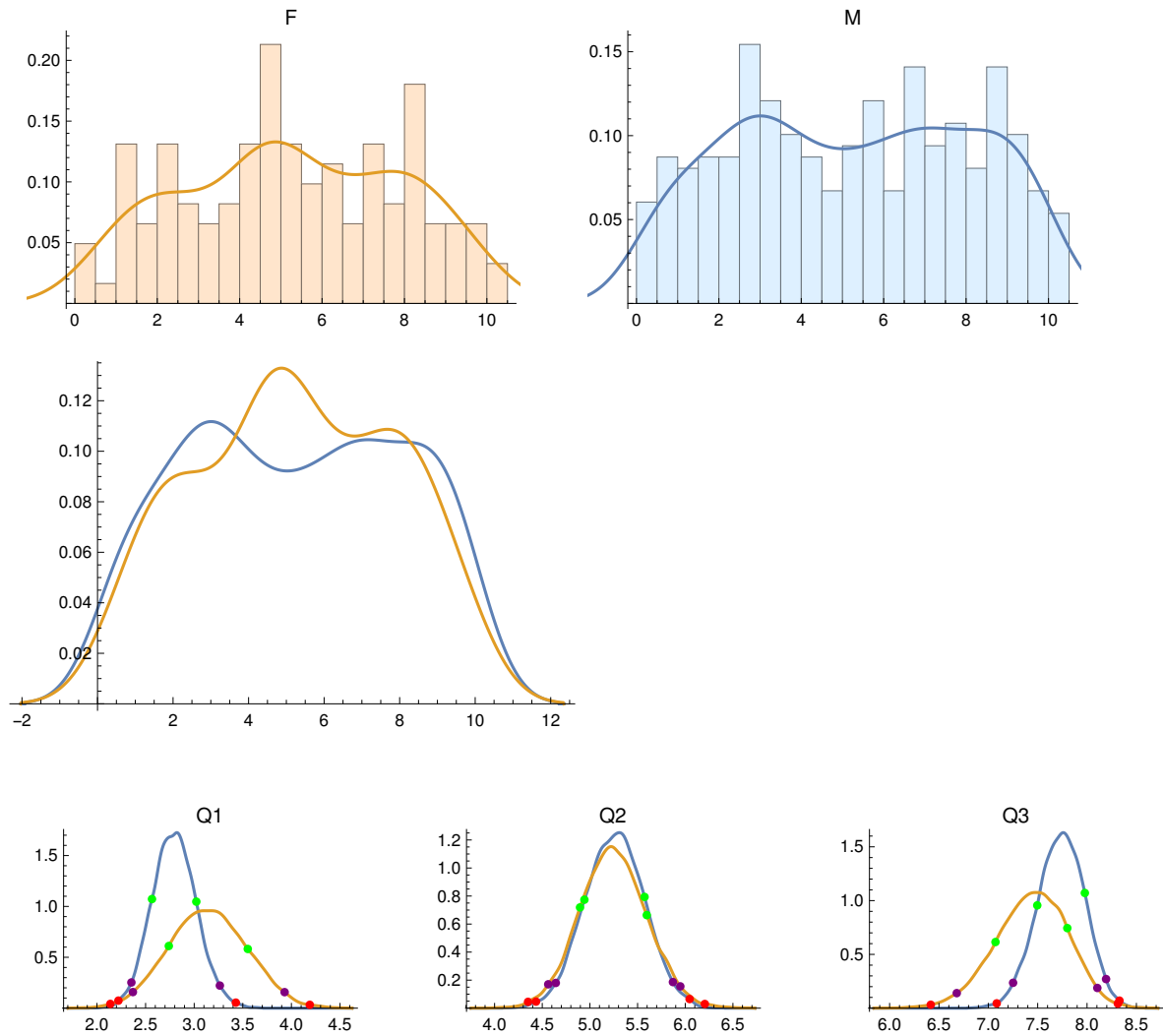
No. Female PIs = 122

No. Male PIs = 298

F PI Quartiles: {3.18, 5., 7.45}

M PI Quartiles: {2.83, 5.295, 7.69}

Anderson-Darling two-sample test p-value: 0.506714



## Male PIs:

	Quartile Score	68% CI	95% CI	99% CI
Quartile 1	2.83	2.566 3.022	2.354 3.264	2.221 3.428
Quartile 2	5.295	4.942 5.573	4.642 5.871	4.435 6.046
Quartile 3	7.69	7.496 7.978	7.251 8.193	7.085 8.329

## Female PIs:

	Quartile Score	68% CI	95% CI	99% CI
Quartile 1	3.18	2.739 3.551	2.369 3.93	2.138 4.189
Quartile 2	5.	4.896 5.596	4.563 5.948	4.351 6.206
Quartile 3	7.45	7.072 7.8	6.68 8.104	6.417 8.312

## Quartile differences, F minus M:

	diff.	upper/lower error bars
Quartile 1	0.35	0.463 -0.4662
Quartile 2	-0.295	0.4713 -0.474
Quartile 3	-0.24	0.4344 -0.4392

{}

2016: VLA only

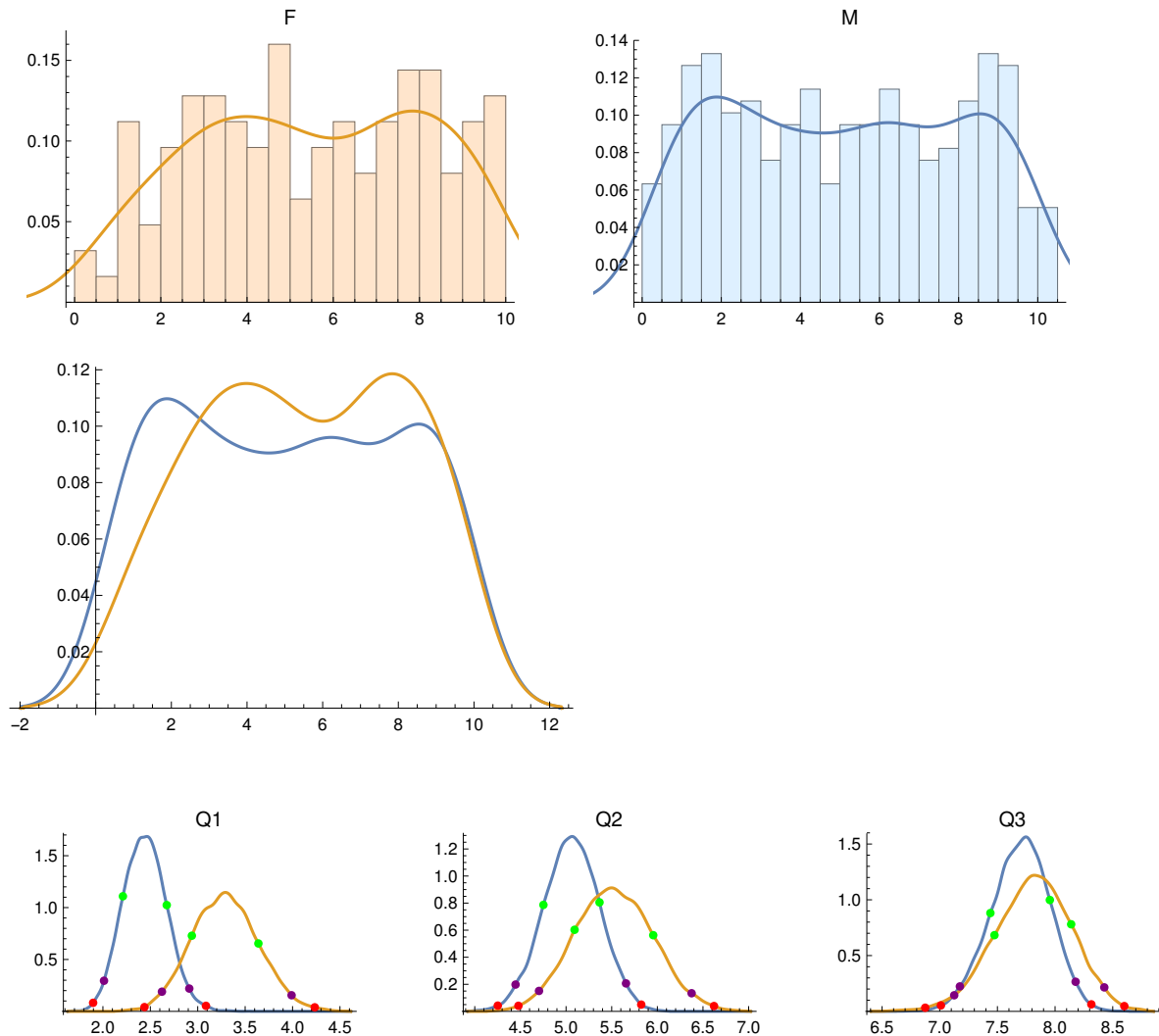
No. Female PIs = 125

No. Male PIs = 316

F PI Quartiles: {3.33, 5.56, 7.7925}

M PI Quartiles: {2.39, 5.115, 7.78}

Anderson-Darling two-sample test p-value: 0.107089



## Male PIs:

	Quartile Score	68% CI	95% CI	99% CI
Quartile 1	2.39	2.211 2.673	2.012 2.911	1.897 3.087
Quartile 2	5.115	4.752 5.367	4.447 5.657	4.252 5.824
Quartile 3	7.78	7.439 7.955	7.175 8.178	7.01 8.315

## Female PIs:

	Quartile Score	68% CI	95% CI	99% CI
Quartile 1	3.33	2.938 3.64	2.623 3.99	2.438 4.234
Quartile 2	5.56	5.093 5.955	4.704 6.375	4.478 6.621
Quartile 3	7.792	7.475 8.139	7.125 8.427	6.874 8.6

## Quartile differences, F minus M:

	diff.	upper/lower error bars
Quartile 1	0.94	0.4188 -0.4179
Quartile 2	0.445	0.5348 -0.5303
Quartile 3	0.0125	0.4176 -0.4153

{}

All Years, 2012-2016: VLA only

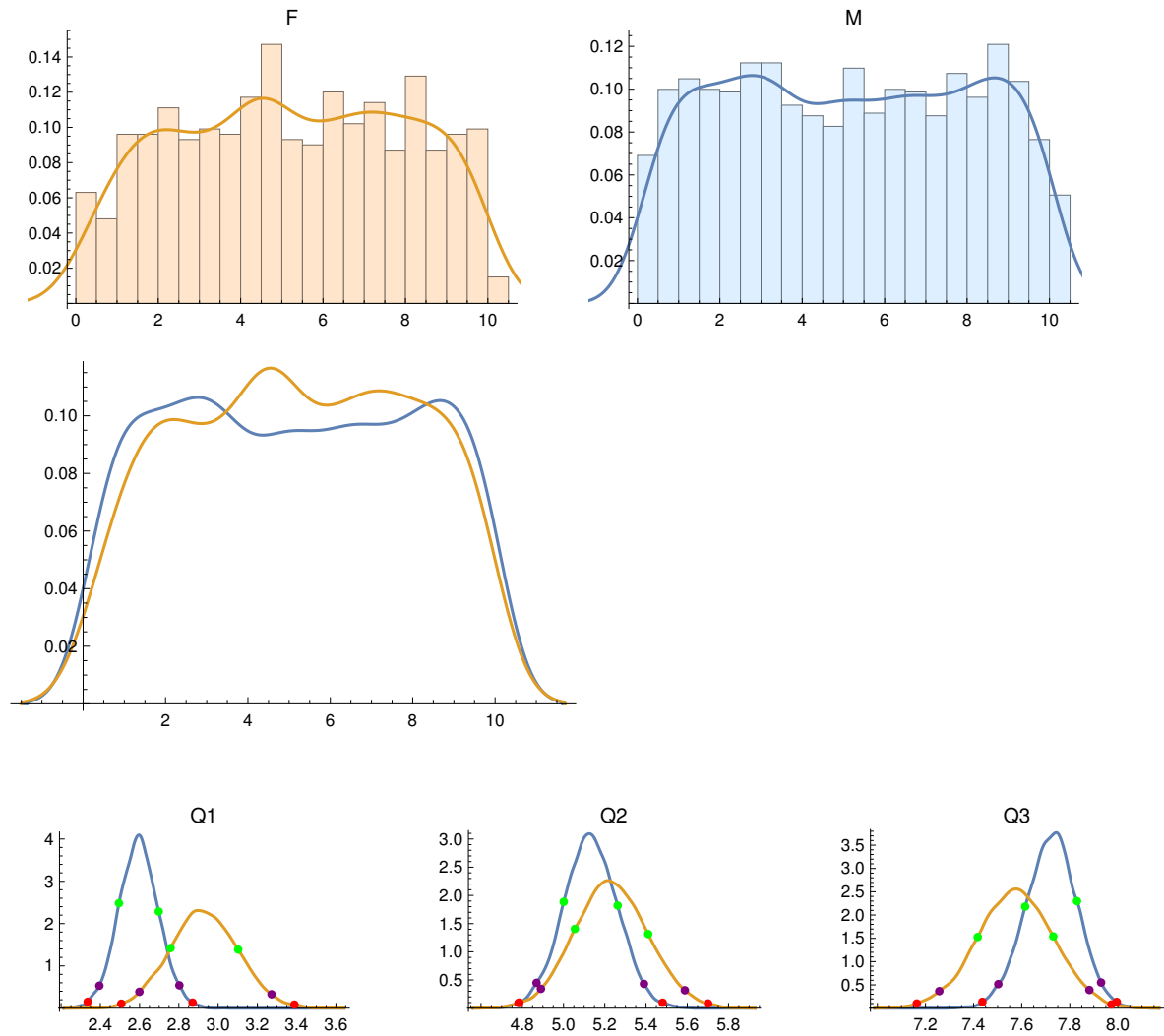
No. Female PIs = 666

No. Male PIs = 1621

F PI Quartiles: {2.95, 5.195, 7.5}

M PI Quartiles: {2.61, 5.12, 7.7325}

Anderson-Darling two-sample test p-value: 0.0949615



## Male PIs:

	Quartile Score	68% CI	95% CI	99% CI
Quartile 1	2.61	2.495 2.698	2.395 2.803	2.335 2.87
Quartile 2	5.12	5.001 5.262	4.869 5.39	4.786 5.481
Quartile 3	7.732	7.614 7.83	7.503 7.93	7.436 7.995

## Female PIs:

	Quartile Score	68% CI	95% CI	99% CI
Quartile 1	2.95	2.758 3.102	2.599 3.272	2.507 3.389
Quartile 2	5.195	5.055 5.41	4.89 5.588	4.782 5.701
Quartile 3	7.5	7.417 7.731	7.257 7.881	7.164 7.973

## Quartile differences, F minus M:

	diff.	upper/lower error bars
Quartile 1	0.34	0.2 -0.2018
Quartile 2	0.075	0.2222 -0.2197
Quartile 3	-0.2325	0.1912 -0.1921

{}



2012: GBT only

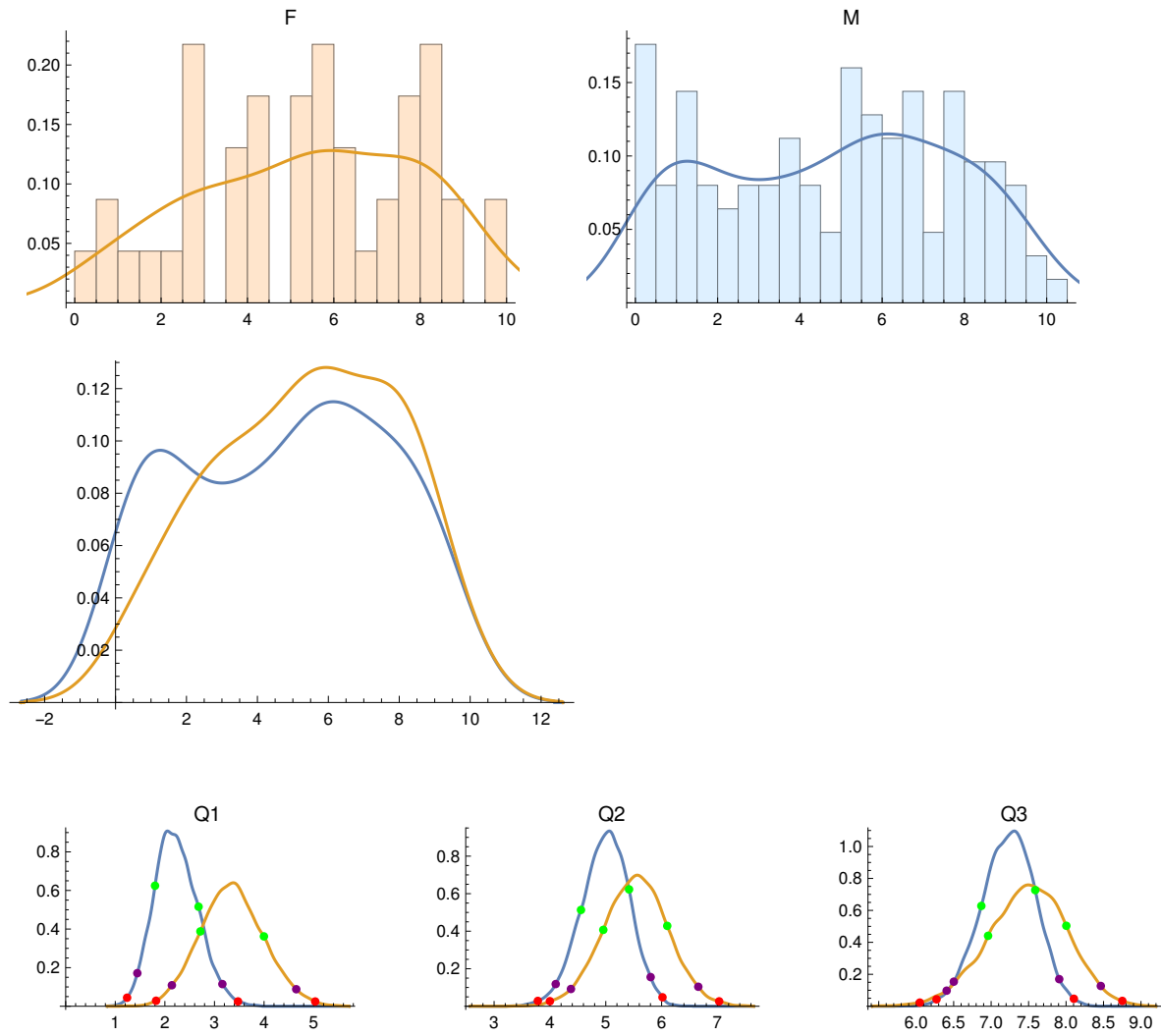
No. Female PIs = 46

No. Male PIs = 125

F PI Quartiles: {3.55, 5.62, 7.72}

M PI Quartiles: {2.11, 5.16, 7.16}

Anderson-Darling two-sample test p-value: 0.299636



## Male PIs:

	Quartile Score	68% CI	95% CI	99% CI
Quartile 1	2.11	1.801 2.68	1.444 3.16	1.239 3.475
Quartile 2	5.16	4.556 5.417	4.103 5.803	3.783 6.016
Quartile 3	7.16	6.869 7.589	6.502 7.909	6.271 8.104

## Female PIs:

	Quartile Score	68% CI	95% CI	99% CI
Quartile 1	3.55	2.716 3.997	2.141 4.649	1.823 5.032
Quartile 2	5.62	4.955 6.101	4.376 6.657	3.999 7.03
Quartile 3	7.72	6.959 8.004	6.407 8.464	6.048 8.751

## Quartile differences, F minus M:

	diff.	upper/lower error bars
Quartile 1	1.44	0.7826 -0.7833
Quartile 2	0.46	0.7073 -0.7086
Quartile 3	0.56	0.6389 -0.6354

{}

2013: GBT only

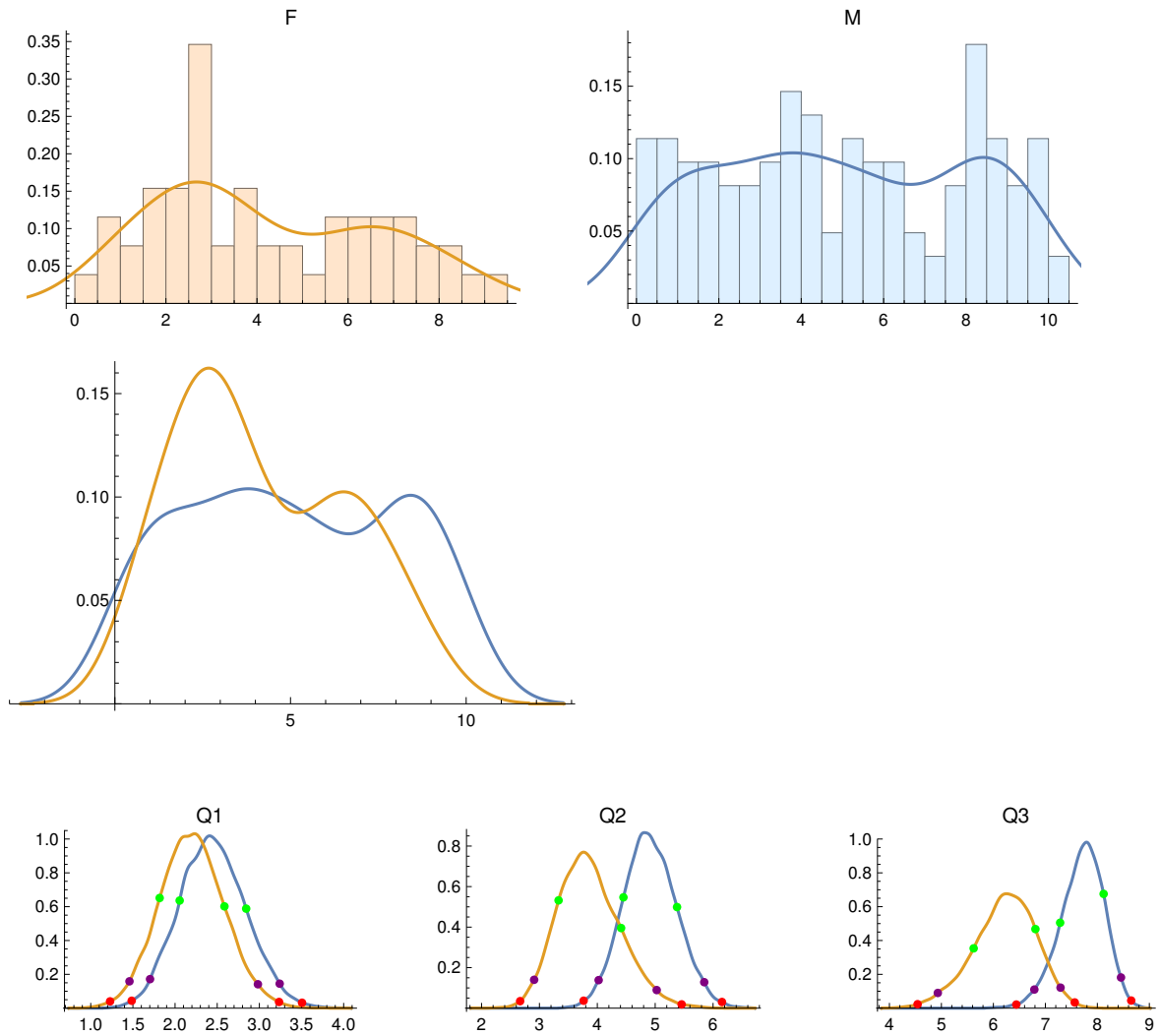
No. Female PIs = 52

No. Male PIs = 123

F PI Quartiles: {2.435, 3.68, 6.27}

M PI Quartiles: {2.455, 4.76, 8.1075}

Anderson-Darling two-sample test p-value: 0.0394319



## Male PIs:

	Quartile Score	68% CI	95% CI	99% CI
Quartile 1	2.455	2.055 2.844	1.703 3.241	1.486 3.506
Quartile 2	4.76	4.451 5.377	4.023 5.847	3.764 6.154
Quartile 3	8.108	7.284 8.12	6.788 8.455	6.441 8.651

## Female PIs:

	Quartile Score	68% CI	95% CI	99% CI
Quartile 1	2.435	1.818 2.586	1.459 2.983	1.229 3.234
Quartile 2	3.68	3.331 4.411	2.909 5.026	2.667 5.457
Quartile 3	6.27	5.62 6.809	4.931 7.292	4.542 7.565

## Quartile differences, F minus M:

	diff.	upper/lower error bars
Quartile 1	-0.02	0.5509 -0.5536
Quartile 2	-1.08	0.7123 -0.7029
Quartile 3	-1.8375	0.716 -0.7174

{}

2014: GBT only

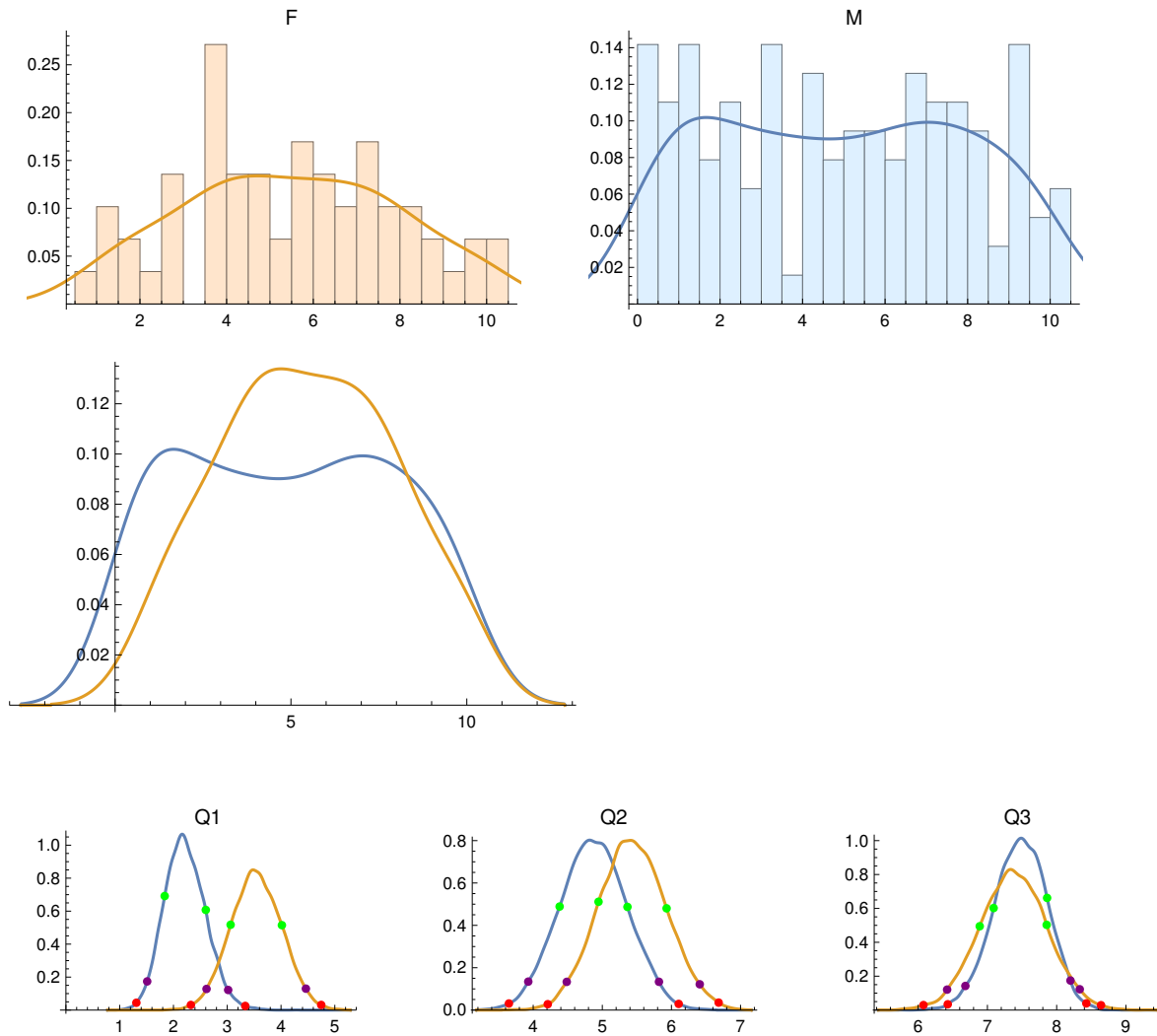
No. Female PIs = 59

No. Male PIs = 127

F PI Quartiles: {3.6775, 5.59, 7.2675}

M PI Quartiles: {2.15, 4.75, 7.415}

Anderson-Darling two-sample test p-value: 0.0758719



## Male PIs:

	Quartile Score	68% CI	95% CI	99% CI
Quartile 1	2.15	1.837 2.601	1.511 3.017	1.31 3.335
Quartile 2	4.75	4.382 5.364	3.929 5.82	3.649 6.105
Quartile 3	7.415	7.09 7.862	6.682 8.199	6.427 8.428

## Female PIs:

	Quartile Score	68% CI	95% CI	99% CI
Quartile 1	3.678	3.063 4.016	2.615 4.462	2.324 4.748
Quartile 2	5.59	4.945 5.93	4.485 6.41	4.211 6.683
Quartile 3	7.268	6.889 7.856	6.418 8.333	6.077 8.641

## Quartile differences, F minus M:

	diff.	upper/lower error bars
Quartile 1	1.5275	0.5963 -0.6085
Quartile 2	0.84	0.6882 -0.6851
Quartile 3	-0.1475	0.6216 -0.6217

{}

2015: GBT only

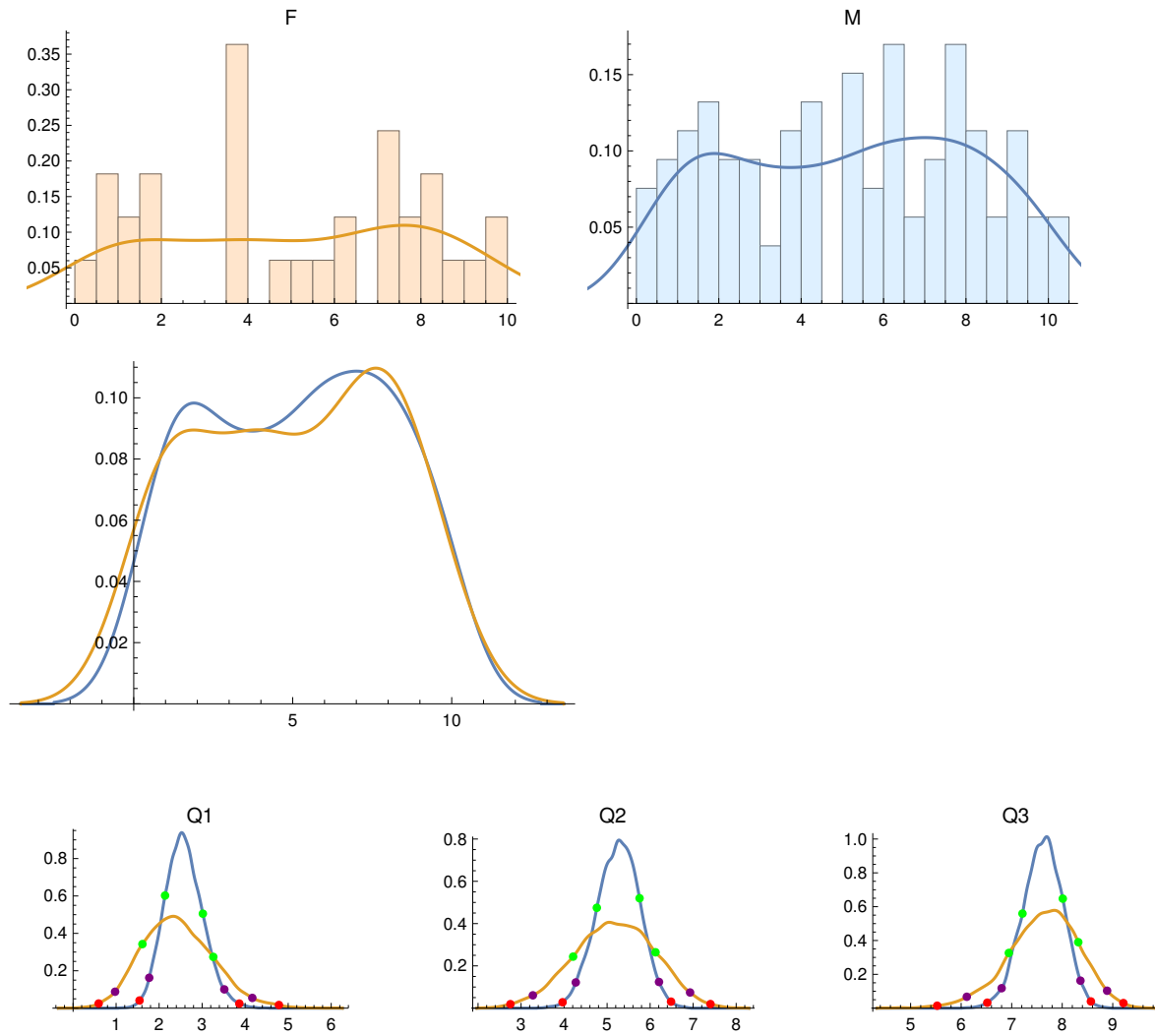
No. Female PIs = 33

No. Male PIs = 106

F PI Quartiles: {1.73, 5., 7.8225}

M PI Quartiles: {2.39, 5.39, 7.58}

Anderson-Darling two-sample test p-value: 0.944055



## Male PIs:

	Quartile Score	68% CI	95% CI	99% CI
Quartile 1	2.39	2.138 3.017	1.77 3.515	1.545 3.864
Quartile 2	5.39	4.761 5.754	4.271 6.206	3.965 6.486
Quartile 3	7.58	7.214 8.011	6.801 8.361	6.517 8.568

## Female PIs:

	Quartile Score	68% CI	95% CI	99% CI
Quartile 1	1.73	1.612 3.259	0.976 4.166	0.594 4.785
Quartile 2	5.	4.21 6.125	3.274 6.928	2.752 7.403
Quartile 3	7.822	6.943 8.318	6.112 8.888	5.526 9.211

## Quartile differences, F minus M:

	diff.	upper/lower error bars
Quartile 1	-0.66	0.9354 -0.9292
Quartile 2	-0.39	1.0762 -1.0909
Quartile 3	0.2425	0.7892 -0.7984

{}



2016: GBT only

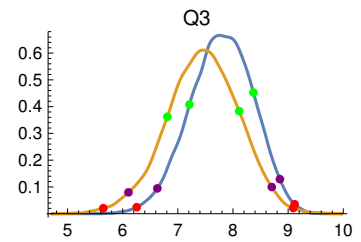
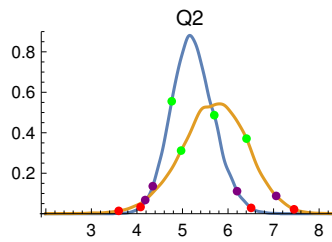
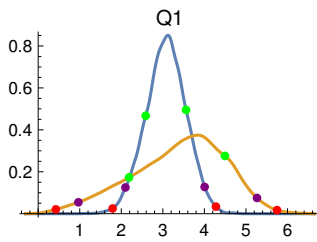
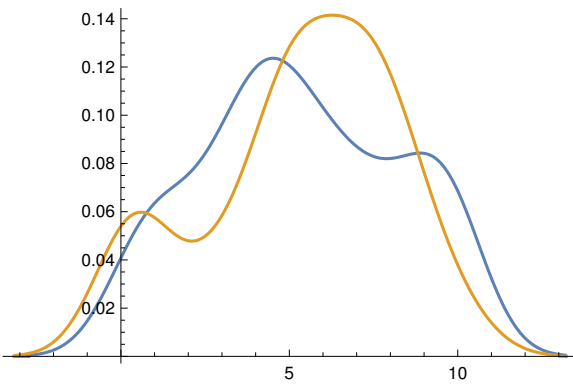
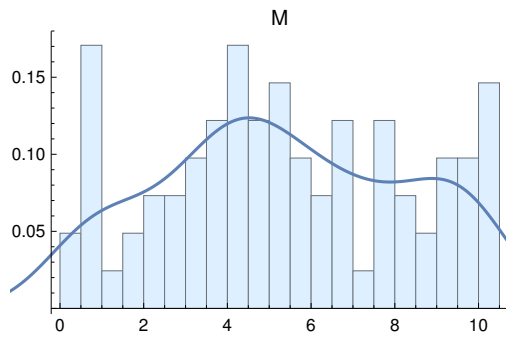
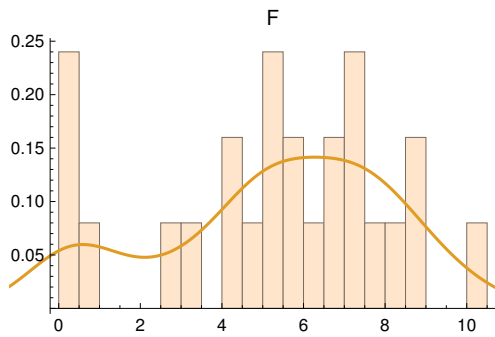
No. Female PIs = 25

No. Male PIs = 82

F PI Quartiles: {3.935, 5.56, 7.385}

M PI Quartiles: {3.33, 5.045, 7.67}

Anderson-Darling two-sample test p-value: 0.552959



## Male PIs:

	Quartile Score	68% CI	95% CI	99% CI
Quartile 1	3.33	2.587 3.558	2.099 4.005	1.791 4.277
Quartile 2	5.045	4.764 5.698	4.348 6.198	4.08 6.507
Quartile 3	7.67	7.211 8.371	6.628 8.851	6.254 9.117

## Female PIs:

	Quartile Score	68% CI	95% CI	99% CI
Quartile 1	3.935	2.187 4.494	0.968 5.266	0.425 5.748
Quartile 2	5.56	4.97 6.406	4.182 7.057	3.599 7.45
Quartile 3	7.385	6.81 8.113	6.104 8.703	5.648 9.093

## Quartile differences, F minus M:

	diff.	upper/lower error bars
Quartile 1	0.605	1.2094 -1.2546
Quartile 2	0.515	0.8618 -0.8649
Quartile 3	-0.285	0.877 -0.8629

{}

All Years, 2012-2016: GBT only

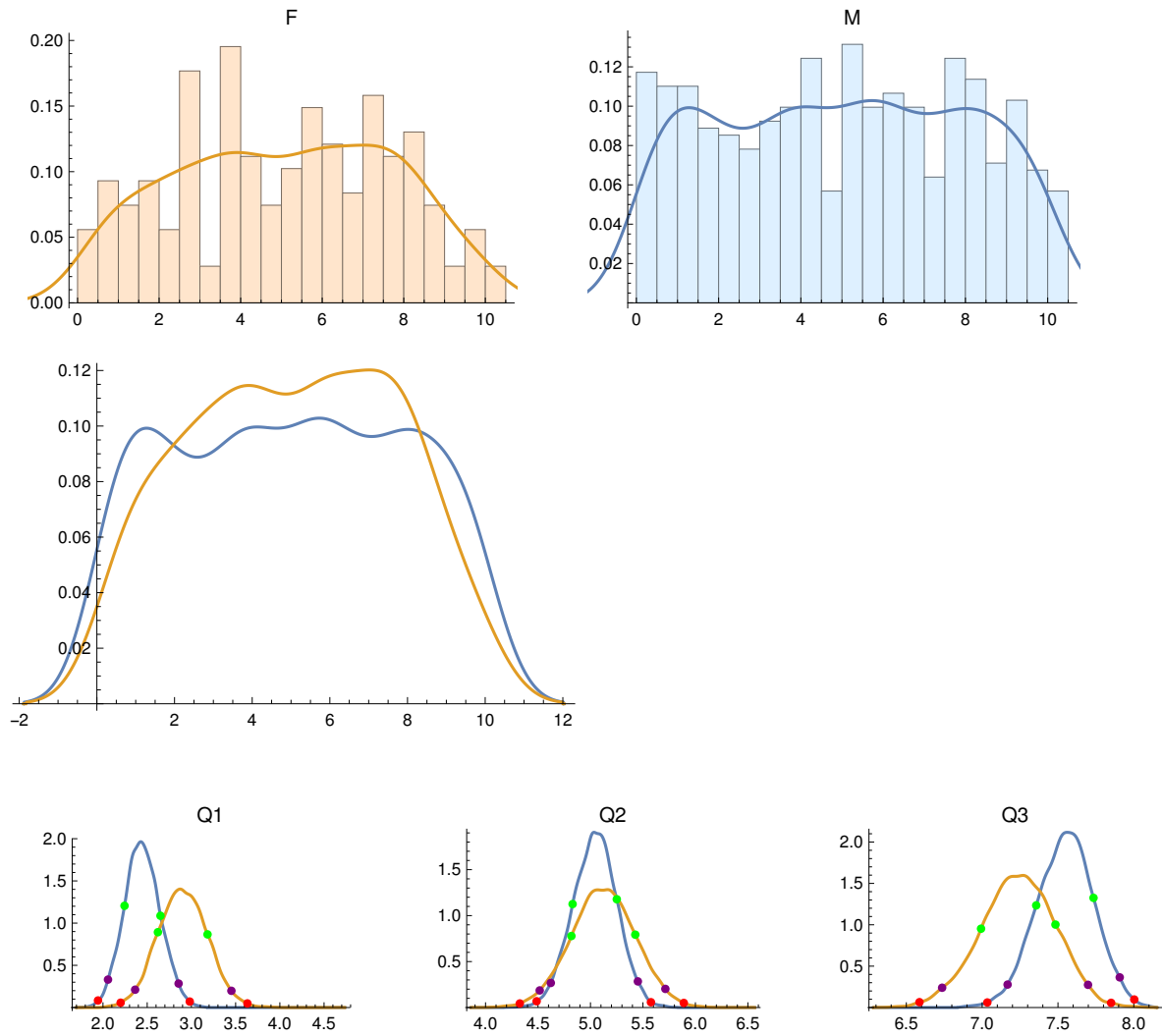
No. Female PIs = 215

No. Male PIs = 563

F PI Quartiles: {2.8, 5.15, 7.2675}

M PI Quartiles: {2.4075, 5.15, 7.5875}

Anderson-Darling two-sample test p-value: 0.114912



## Male PIs:

	Quartile Score	68% CI	95% CI	99% CI
Quartile 1	2.407	2.244 2.65	2.057 2.855	1.944 2.981
Quartile 2	5.15	4.83 5.251	4.622 5.452	4.487 5.576
Quartile 3	7.588	7.357 7.734	7.168 7.907	7.034 8.003

## Female PIs:

	Quartile Score	68% CI	95% CI	99% CI
Quartile 1	2.8	2.621 3.182	2.364 3.452	2.2 3.633
Quartile 2	5.15	4.818 5.427	4.516 5.714	4.327 5.89
Quartile 3	7.268	6.993 7.483	6.736 7.698	6.587 7.85

## Quartile differences, F minus M:

	diff.	upper/lower error bars
Quartile 1	0.3925	0.3429 -0.3418
Quartile 2	0.	0.3738 -0.3725
Quartile 3	-0.32	0.3065 -0.3049

{}

2012: VLBA only

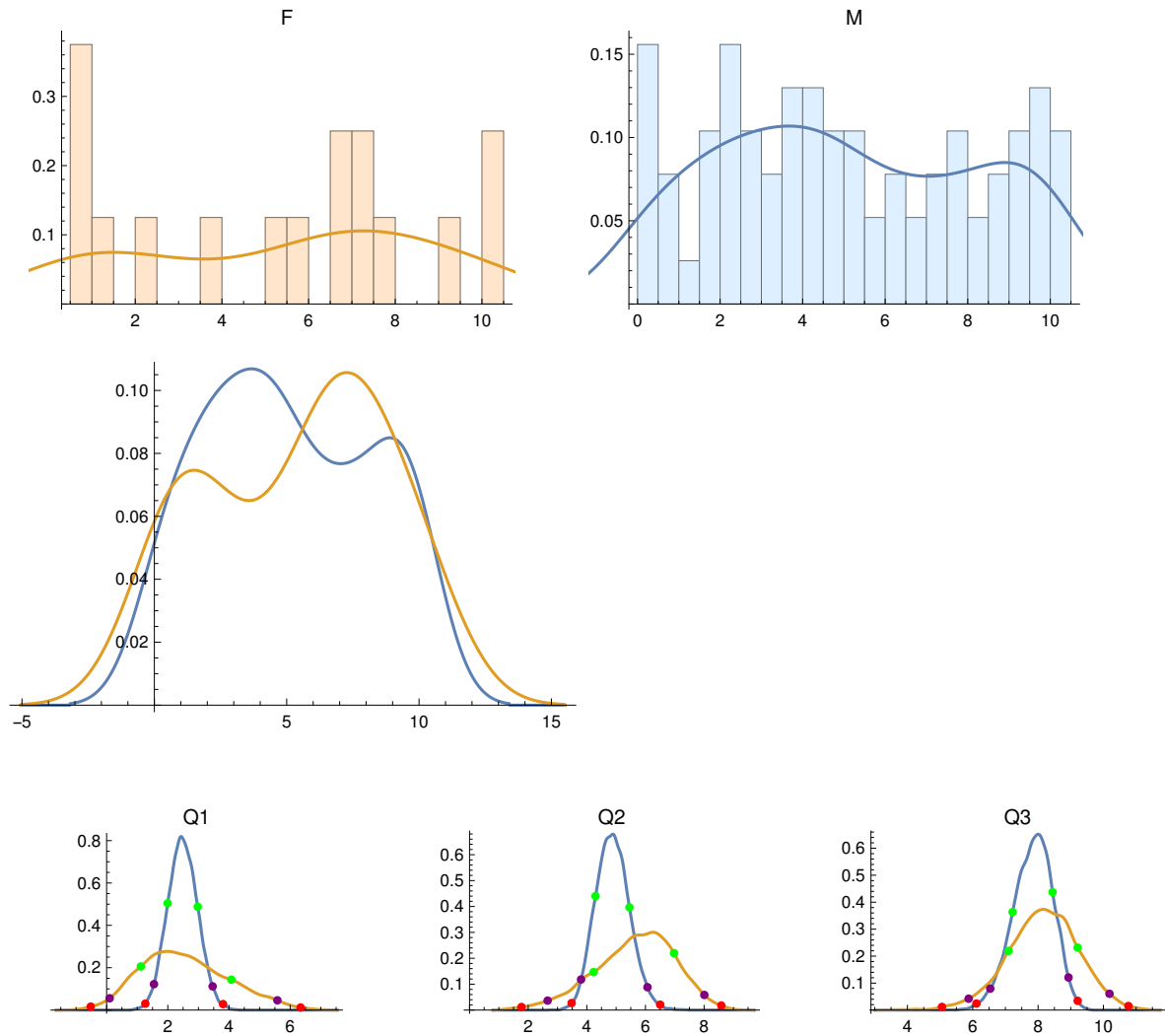
No. Female PIs = 16

No. Male PIs = 77

F PI Quartiles: {1.76, 6.35, 7.6}

M PI Quartiles: {2.335, 4.64, 7.745}

Anderson-Darling two-sample test p-value: 0.74375



## Male PIs:

	Quartile Score	68% CI	95% CI	99% CI
Quartile 1	2.335	1.995 2.977	1.547 3.465	1.265 3.805
Quartile 2	4.64	4.298 5.454	3.804 6.069	3.482 6.503
Quartile 3	7.745	7.22 8.444	6.536 8.932	6.113 9.212

## Female PIs:

	Quartile Score	68% CI	95% CI	99% CI
Quartile 1	1.76	1.118 4.078	0.099 5.581	-0.519 6.341
Quartile 2	6.35	4.234 6.976	2.664 8.009	1.772 8.587
Quartile 3	7.6	7.094 9.211	5.874 10.187	5.059 10.765

## Quartile differences, F minus M:

	diff.	upper/lower error bars
Quartile 1	-0.575	1.5757 -1.5223
Quartile 2	1.71	1.4675 -1.4959
Quartile 3	-0.145	1.23 -1.2217

{}

2013: VLBA only

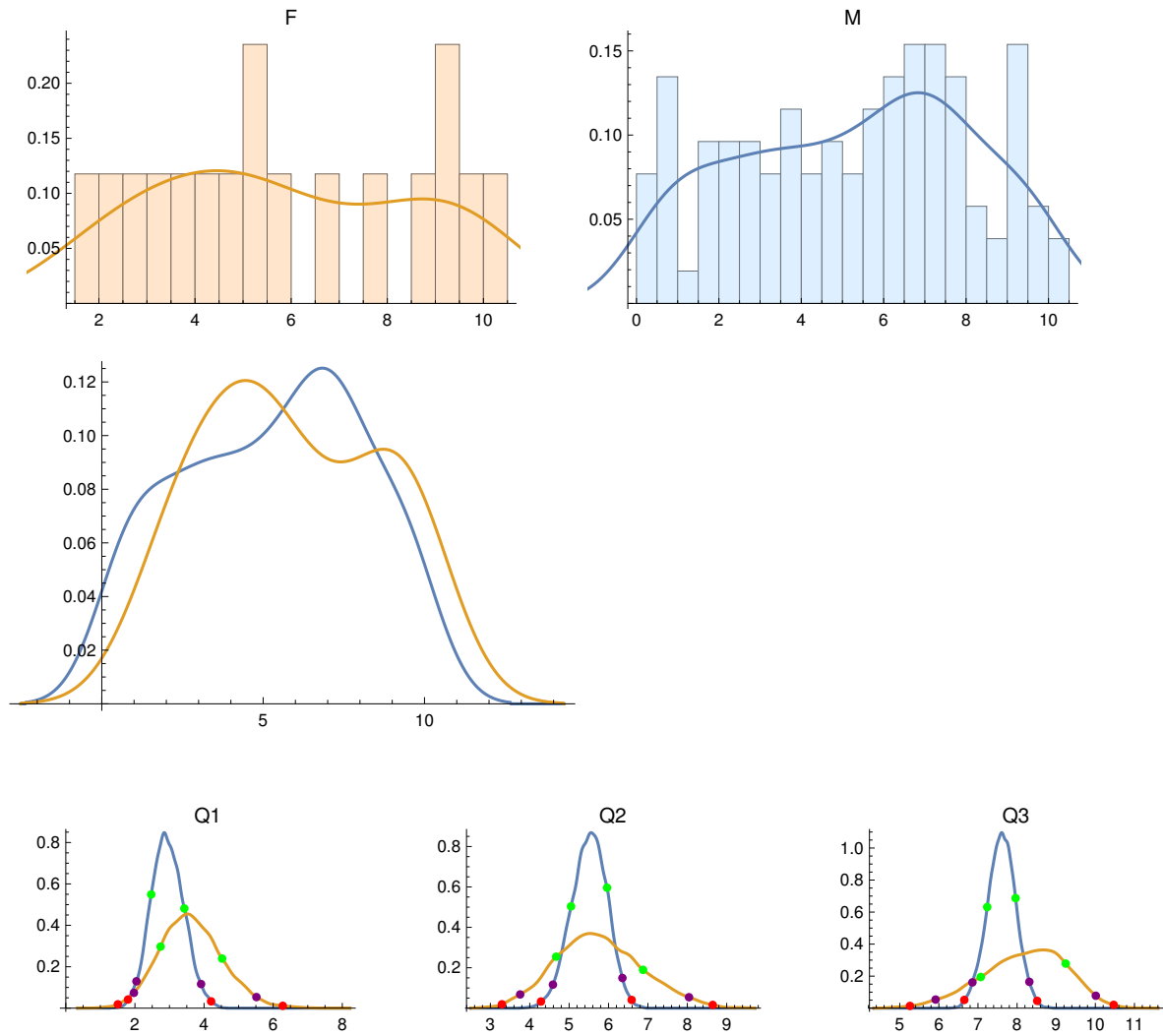
No. Female PIs = 17

No. Male PIs = 104

F PI Quartiles: {3.7825, 5.31, 8.695}

M PI Quartiles: {2.975, 5.645, 7.385}

Anderson-Darling two-sample test p-value: 0.558452



## Male PIs:

	Quartile Score	68% CI	95% CI	99% CI
Quartile 1	2.975	2.471 3.43	2.044 3.914	1.8 4.204
Quartile 2	5.645	5.048 5.963	4.588 6.352	4.285 6.586
Quartile 3	7.385	7.236 7.962	6.858 8.314	6.651 8.514

## Female PIs:

	Quartile Score	68% CI	95% CI	99% CI
Quartile 1	3.782	2.742 4.523	1.971 5.515	1.506 6.278
Quartile 2	5.31	4.671 6.876	3.756 8.043	3.294 8.645
Quartile 3	8.695	7.071 9.243	5.917 10.012	5.262 10.47

## Quartile differences, F minus M:

	diff.	upper/lower error bars
Quartile 1	0.8075	1.0065 -1.005
Quartile 2	-0.335	1.1928 -1.165
Quartile 3	1.31	1.1245 -1.1477

{}



2014: VLBA only

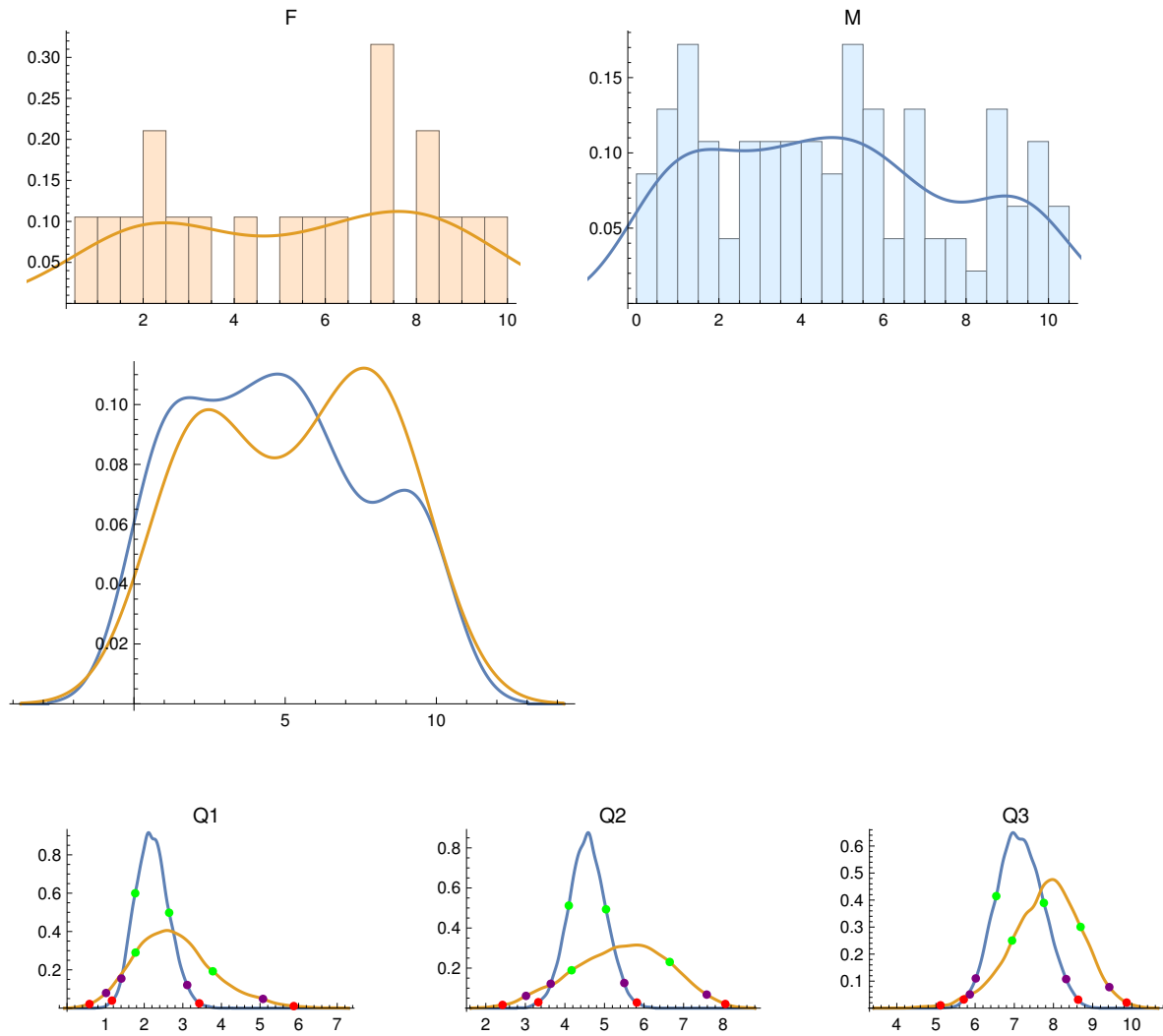
No. Female PIs = 19

No. Male PIs = 93

F PI Quartiles: {2.455, 5.56, 7.865}

M PI Quartiles: {2.095, 4.6, 6.8175}

Anderson-Darling two-sample test p-value: 0.508053



## Male PIs:

	Quartile Score	68% CI	95% CI	99% CI
Quartile 1	2.095	1.766 2.646	1.407 3.114	1.164 3.427
Quartile 2	4.6	4.098 5.039	3.641 5.502	3.328 5.818
Quartile 3	6.818	6.54 7.755	6.016 8.323	5.71 8.629

## Female PIs:

	Quartile Score	68% CI	95% CI	99% CI
Quartile 1	2.455	1.774 3.776	1.011 5.078	0.581 5.875
Quartile 2	5.56	4.169 6.649	3.017 7.584	2.424 8.055
Quartile 3	7.865	6.942 8.691	5.865 9.425	5.116 9.867

## Quartile differences, F minus M:

	diff.	upper/lower error bars
Quartile 1	0.36	1.0886 -1.0957
Quartile 2	0.96	1.3126 -1.3466
Quartile 3	1.0475	1.0706 -1.0568

{}

2015: VLBA only

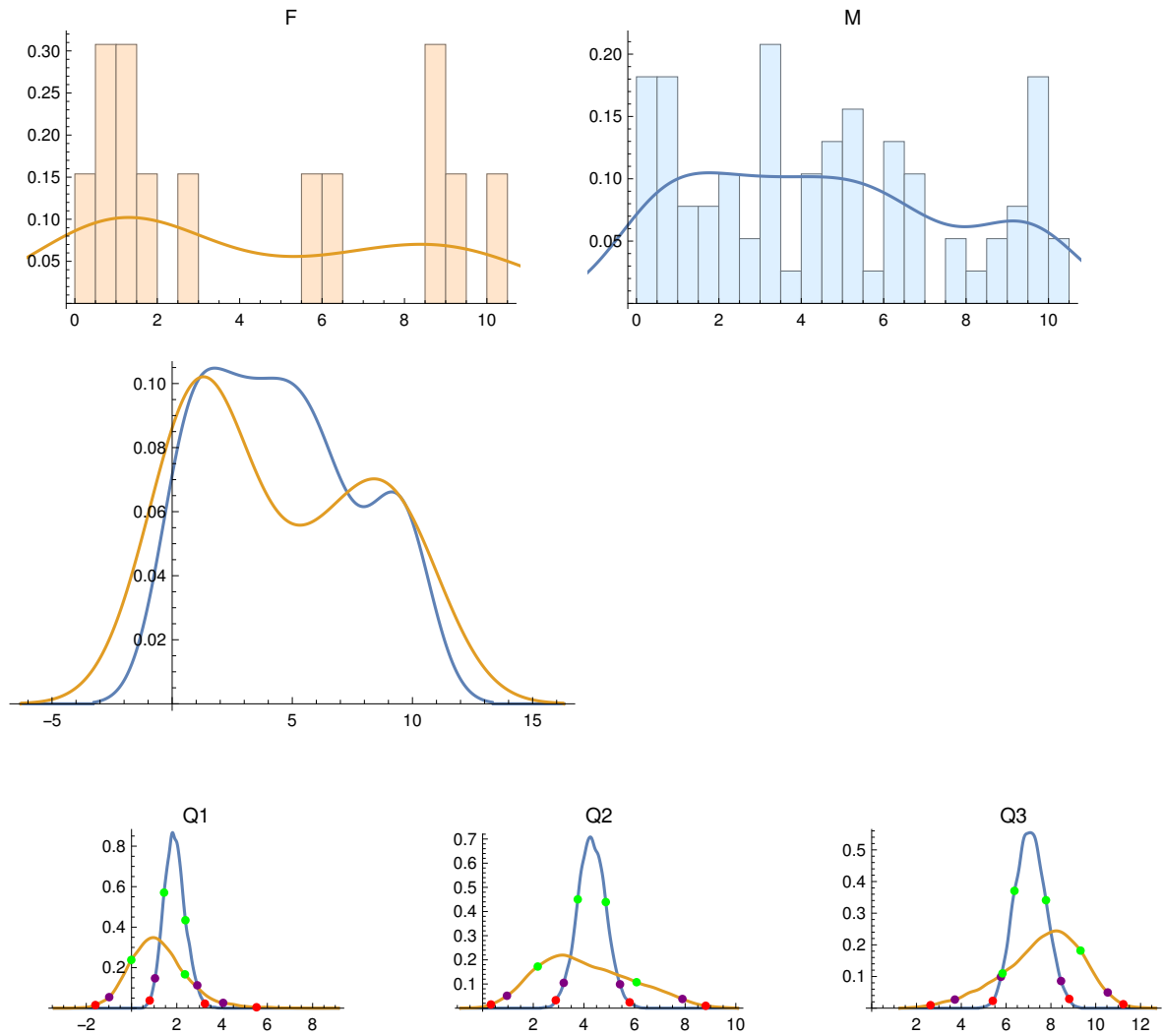
No. Female PIs = 13

No. Male PIs = 77

F PI Quartiles: {1.0375, 2.58, 8.6425}

M PI Quartiles: {1.925, 4.44, 6.695}

Anderson-Darling two-sample test p-value: 0.617234



## Male PIs:

	Quartile Score	68% CI	95% CI	99% CI
Quartile 1	1.925	1.437 2.381	1.037 2.905	0.802 3.241
Quartile 2	4.44	3.758 4.865	3.204 5.427	2.89 5.807
Quartile 3	6.695	6.373 7.78	5.769 8.452	5.406 8.818

## Female PIs:

	Quartile Score	68% CI	95% CI	99% CI
Quartile 1	1.038	-0.011 2.359	-0.986 4.048	-1.596 5.522
Quartile 2	2.58	2.177 6.081	0.96 7.892	0.327 8.812
Quartile 3	8.642	5.839 9.321	3.713 10.536	2.625 11.232

## Quartile differences, F minus M:

	diff.	upper/lower error bars
Quartile 1	-0.8875	1.2555 -1.2827
Quartile 2	-1.86	2.0874 -1.9457
Quartile 3	1.9475	1.8414 -1.8981

{}

2016: VLBA only

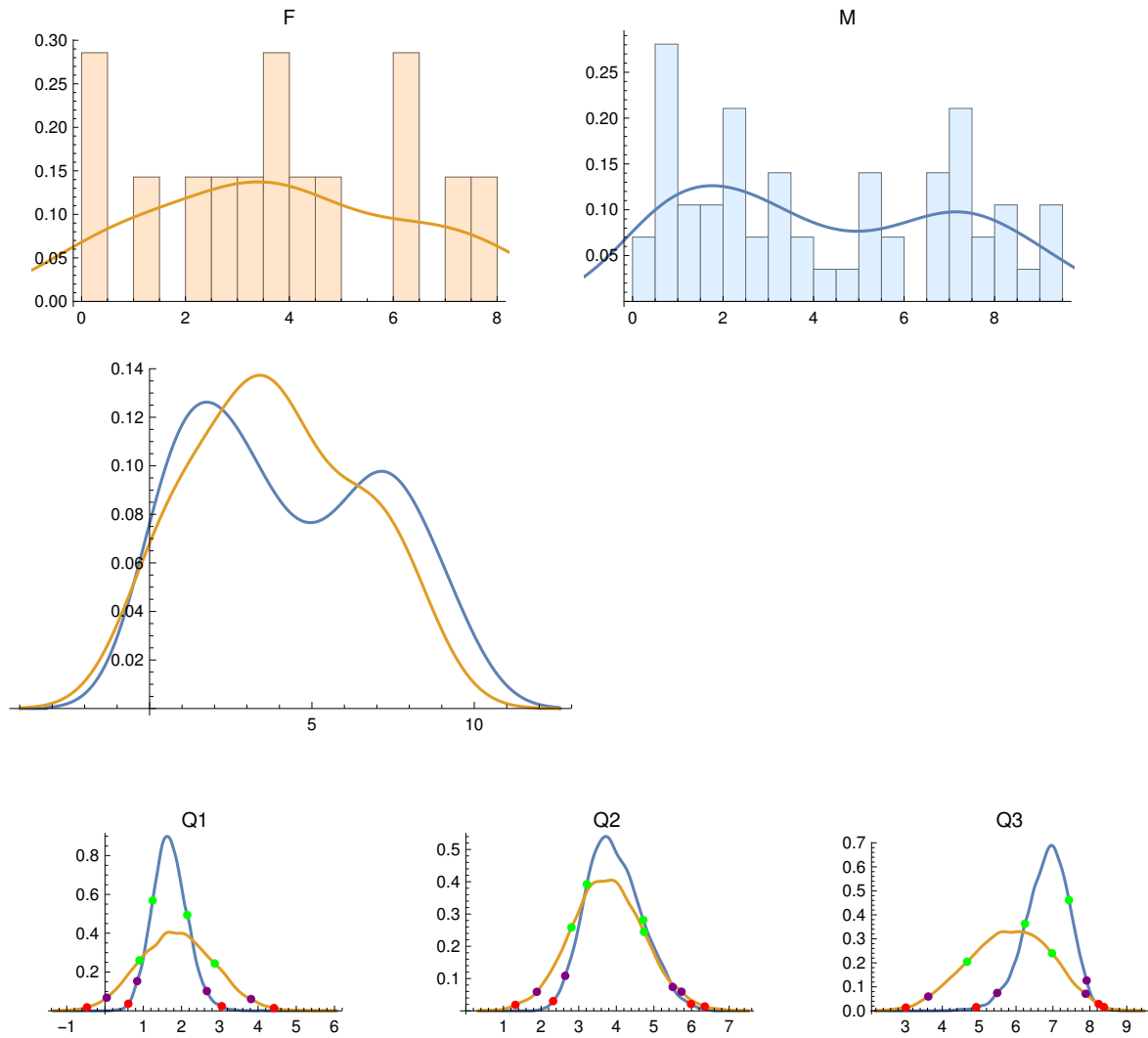
No. Female PIs = 14

No. Male PIs = 57

F PI Quartiles: {2., 3.71, 6.32}

M PI Quartiles: {1.6575, 3.67, 7.}

Anderson-Darling two-sample test p-value: 0.474881



## Male PIs:

	Quartile Score	68% CI	95% CI	99% CI
Quartile 1	1.658	1.246 2.151	0.841 2.662	0.611 3.05
Quartile 2	3.67	3.217 4.717	2.641 5.497	2.32 5.984
Quartile 3	7.	6.242 7.435	5.489 7.913	4.92 8.24

## Female PIs:

	Quartile Score	68% CI	95% CI	99% CI
Quartile 1	2.	0.902 2.869	0.046 3.819	-0.471 4.419
Quartile 2	3.71	2.807 4.734	1.887 5.732	1.317 6.35
Quartile 3	6.32	4.672 6.975	3.621 7.886	3.011 8.381

## Quartile differences, F minus M:

	diff.	upper/lower error bars
Quartile 1	0.3425	1.0805 -1.0929
Quartile 2	0.04	1.2127 -1.2147
Quartile 3	-0.68	1.285 -1.3081

{}

All Years, 2012-2016: VLBA only

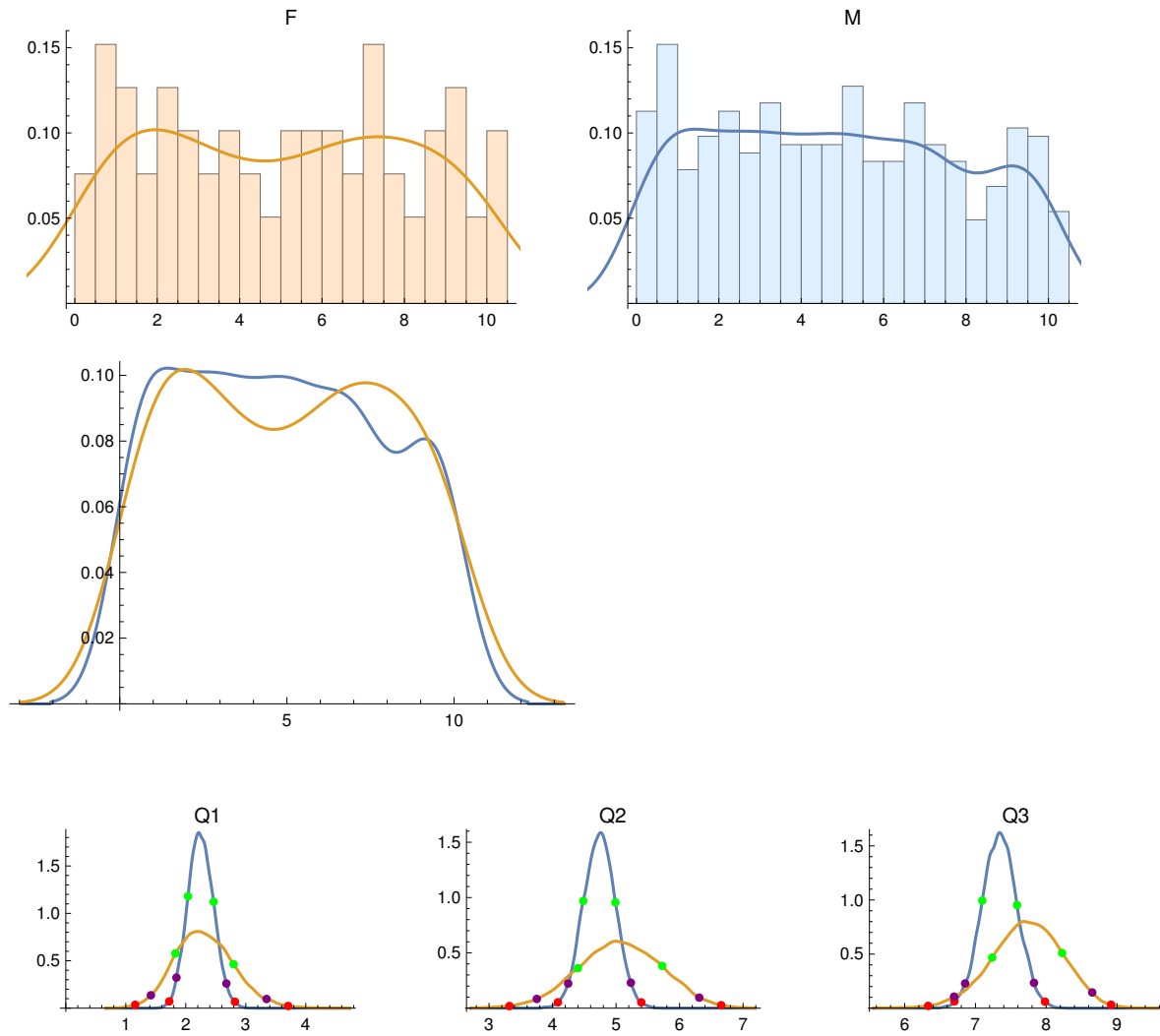
No. Female PIs = 79

No. Male PIs = 408

F PI Quartiles: {2.22, 5.24, 7.535}

M PI Quartiles: {2.21, 4.735, 7.265}

Anderson-Darling two-sample test p-value: 0.866625



## Male PIs:

	Quartile Score	68% CI	95% CI	99% CI
Quartile 1	2.21	2.037 2.464	1.844 2.677	1.725 2.819
Quartile 2	4.735	4.484 4.989	4.246 5.233	4.084 5.397
Quartile 3	7.265	7.096 7.587	6.854 7.827	6.703 7.983

## Female PIs:

	Quartile Score	68% CI	95% CI	99% CI
Quartile 1	2.22	1.828 2.797	1.418 3.347	1.157 3.706
Quartile 2	5.24	4.4 5.727	3.752 6.31	3.321 6.657
Quartile 3	7.535	7.236 8.225	6.697 8.65	6.331 8.917

## Quartile differences, F minus M:

	diff.	upper/lower error bars
Quartile 1	0.01	0.5253 -0.5271
Quartile 2	0.505	0.7006 -0.7002
Quartile 3	0.27	0.557 -0.5513

{}



Cycle 12A: GBT, VLA, and VLBA

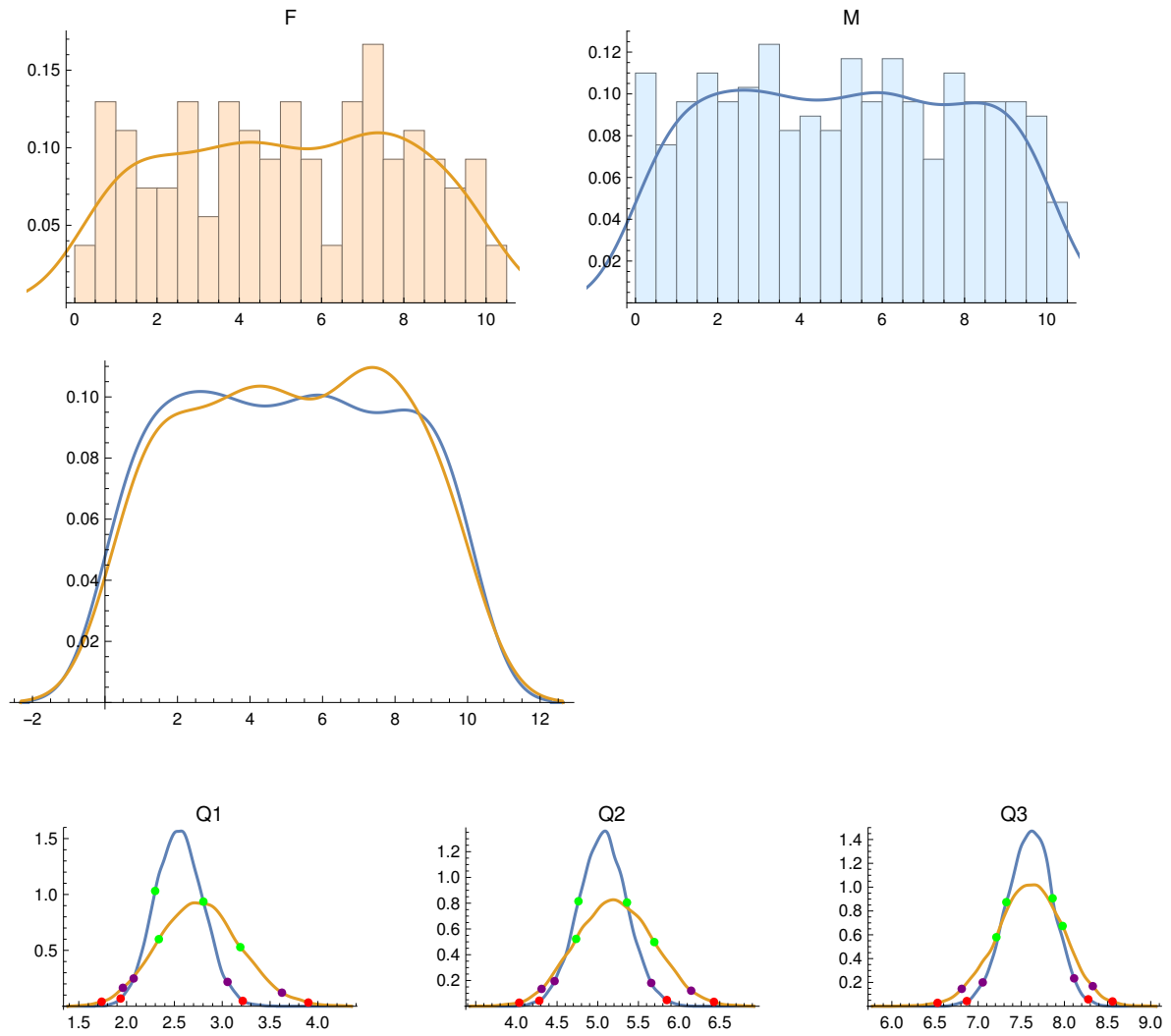
No. Female PIs = 108

No. Male PIs = 291

F PI Quartiles: {2.705, 5.22, 7.48}

M PI Quartiles: {2.52, 5.08, 7.65}

Anderson-Darling two-sample test p-value: 0.910532



## Male PIs:

	Quartile Score	68% CI	95% CI	99% CI
Quartile 1	2.52	2.299 2.803	2.074 3.056	1.938 3.214
Quartile 2	5.08	4.763 5.359	4.469 5.658	4.281 5.849
Quartile 3	7.65	7.327 7.863	7.053 8.112	6.869 8.276

## Female PIs:

	Quartile Score	68% CI	95% CI	99% CI
Quartile 1	2.705	2.337 3.189	1.961 3.624	1.739 3.9
Quartile 2	5.22	4.734 5.695	4.31 6.148	4.035 6.429
Quartile 3	7.48	7.211 7.979	6.81 8.329	6.529 8.557

## Quartile differences, F minus M:

	diff.	upper/lower error bars
Quartile 1	0.185	0.4879 -0.4888
Quartile 2	0.14	0.5674 -0.5572
Quartile 3	-0.17	0.4672 -0.4648

{}

Cycle 12B: GBT, VLA, and VLBA

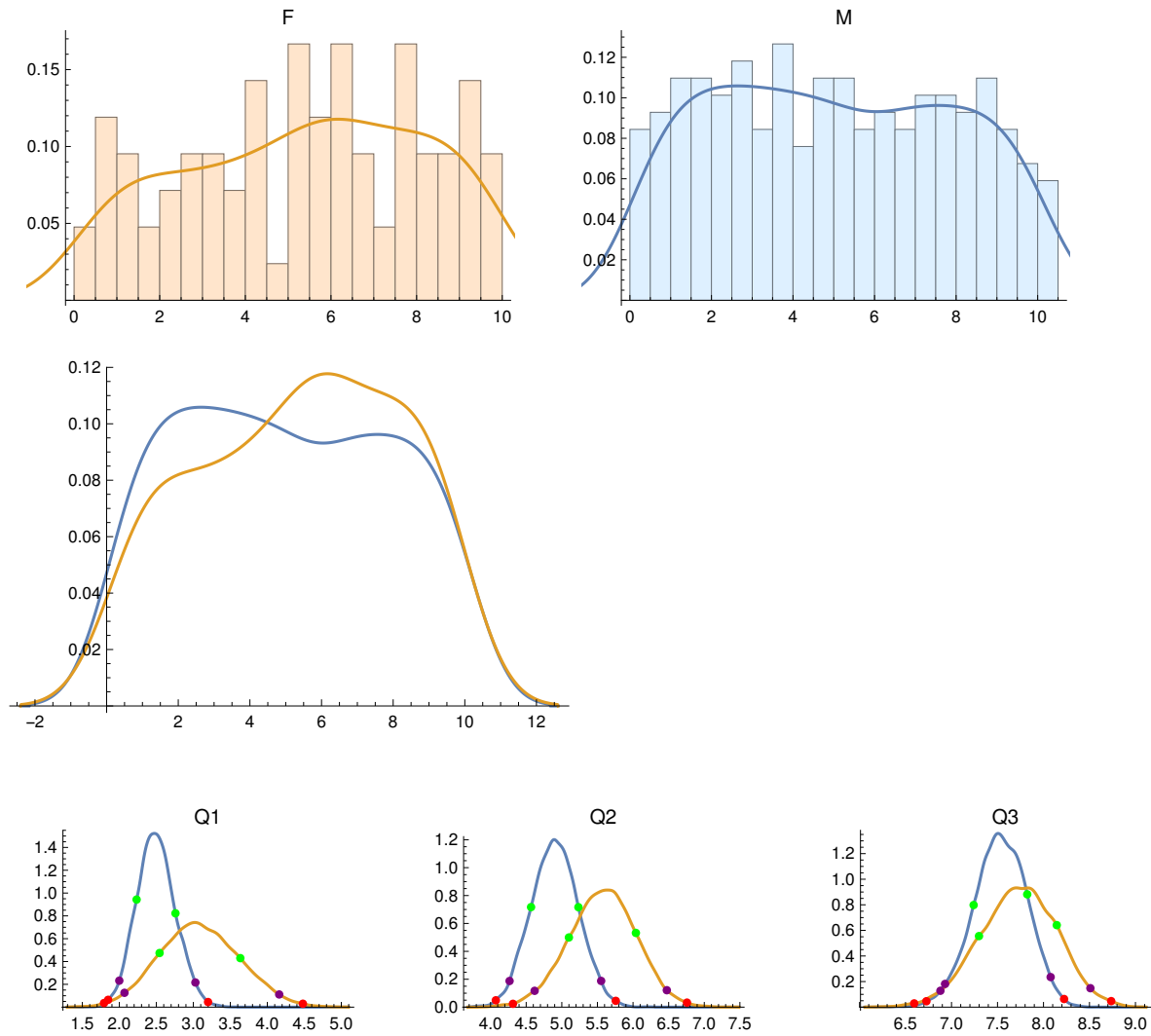
No. Female PIs = 84

No. Male PIs = 237

F PI Quartiles: {3.195, 5.725, 7.755}

M PI Quartiles: {2.49, 4.85, 7.5}

Anderson-Darling two-sample test p-value: 0.397166



## Male PIs:

	Quartile Score	68% CI	95% CI	99% CI
Quartile 1	2.49	2.233 2.759	1.999 3.028	1.848 3.199
Quartile 2	4.85	4.569 5.233	4.267 5.552	4.074 5.758
Quartile 3	7.5	7.24 7.823	6.93 8.078	6.727 8.224

## Female PIs:

	Quartile Score	68% CI	95% CI	99% CI
Quartile 1	3.195	2.544 3.635	2.069 4.161	1.793 4.481
Quartile 2	5.725	5.1 6.04	4.619 6.474	4.314 6.757
Quartile 3	7.755	7.299 8.144	6.879 8.51	6.594 8.736

## Quartile differences, F minus M:

	diff.	upper/lower error bars
Quartile 1	0.705	0.6054 -0.5984
Quartile 2	0.875	0.5748 -0.5784
Quartile 3	0.255	0.5079 -0.5083

{}

Cycle 13A: GBT, VLA, and VLBA

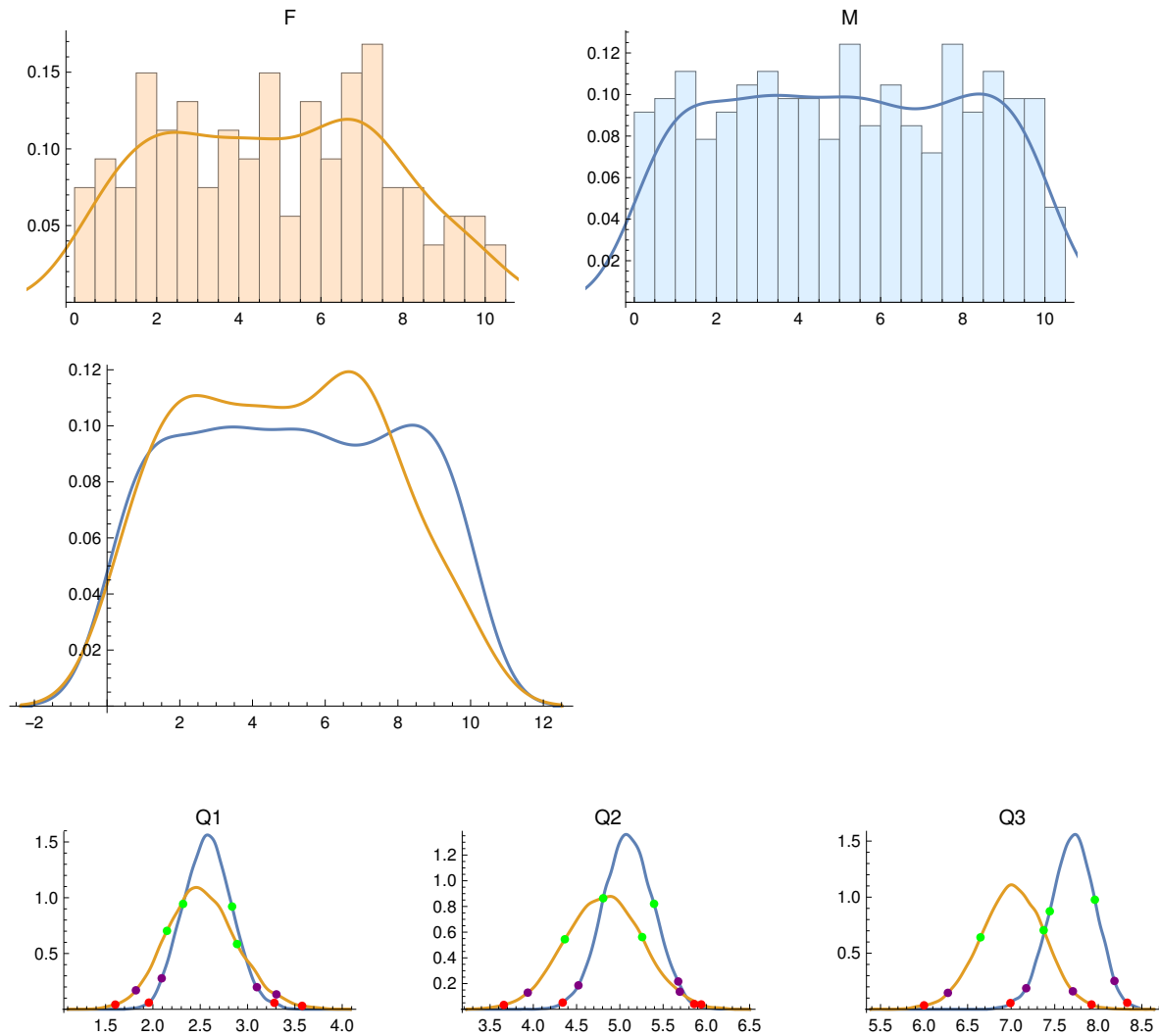
No. Female PIs = 107

No. Male PIs = 306

F PI Quartiles: {2.42, 4.69, 6.995}

M PI Quartiles: {2.55, 5.12, 7.8}

Anderson-Darling two-sample test p-value: 0.306652



## Male PIs:

	Quartile Score	68% CI	95% CI	99% CI
Quartile 1	2.55	2.319 2.837	2.093 3.099	1.958 3.284
Quartile 2	5.12	4.808 5.395	4.521 5.675	4.339 5.859
Quartile 3	7.8	7.443 7.961	7.173 8.186	6.991 8.333

## Female PIs:

	Quartile Score	68% CI	95% CI	99% CI
Quartile 1	2.42	2.149 2.889	1.82 3.305	1.603 3.577
Quartile 2	4.69	4.364 5.258	3.936 5.693	3.659 5.94
Quartile 3	6.995	6.648 7.373	6.273 7.708	6. 7.922

## Quartile differences, F minus M:

	diff.	upper/lower error bars
Quartile 1	-0.13	0.4448 -0.4516
Quartile 2	-0.43	0.5269 -0.5352
Quartile 3	-0.805	0.4467 -0.4497

{}

Cycle 13B: GBT, VLA, and VLBA

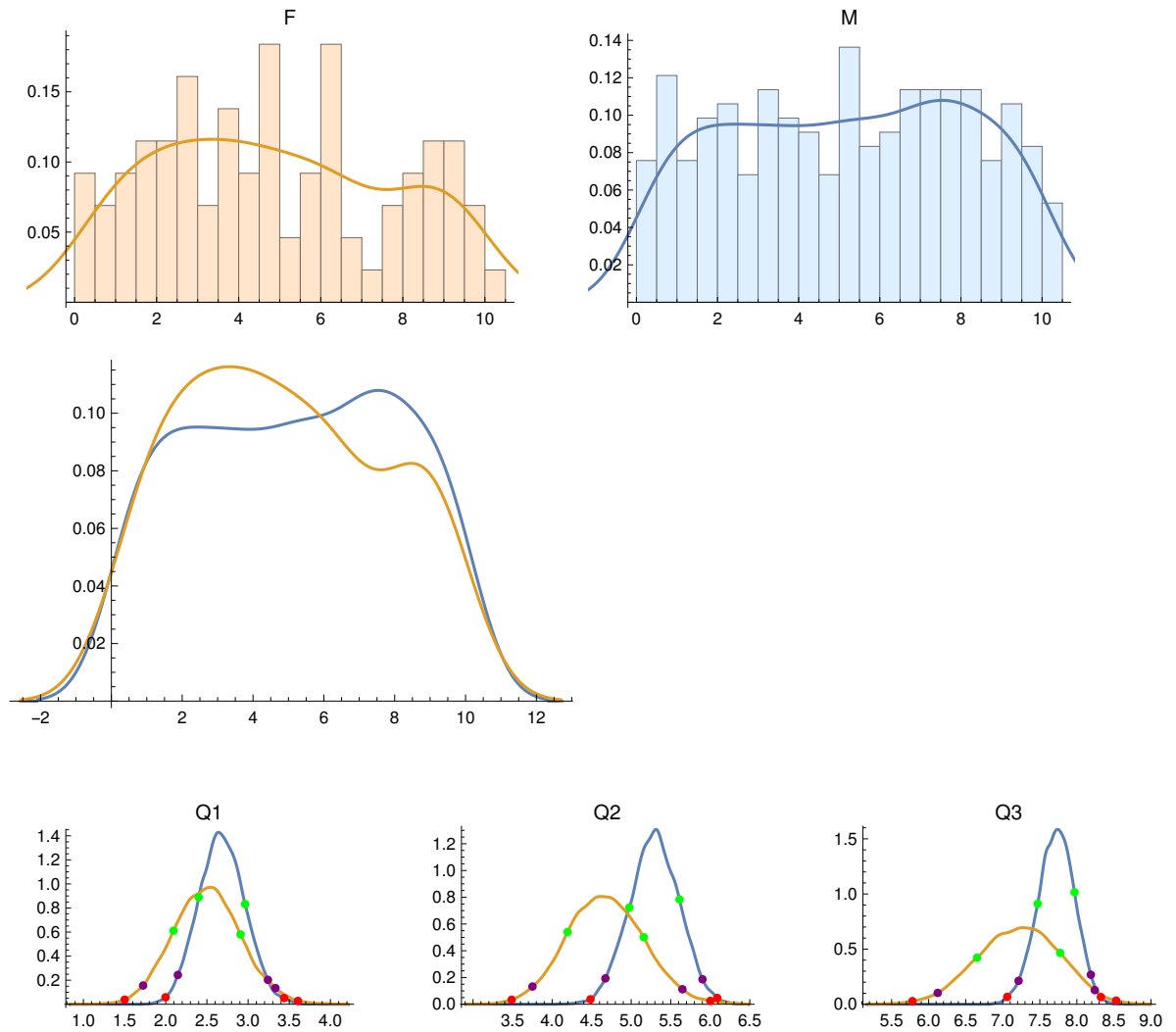
No. Female PIs = 87

No. Male PIs = 264

F PI Quartiles: {2.5875, 4.63, 7.12}

M PI Quartiles: {2.63, 5.31, 7.76}

Anderson-Darling two-sample test p-value: 0.514593



## Male PIs:

	Quartile Score	68% CI	95% CI	99% CI
Quartile 1	2.63	2.401 2.963	2.147 3.241	1.998 3.437
Quartile 2	5.31	4.977 5.611	4.674 5.902	4.485 6.088
Quartile 3	7.76	7.471 7.968	7.214 8.189	7.06 8.325

## Female PIs:

	Quartile Score	68% CI	95% CI	99% CI
Quartile 1	2.588	2.094 2.908	1.725 3.332	1.501 3.606
Quartile 2	4.63	4.196 5.16	3.752 5.648	3.489 6.002
Quartile 3	7.12	6.654 7.775	6.122 8.242	5.78 8.531

## Quartile differences, F minus M:

	diff.	upper/lower error bars
Quartile 1	-0.0425	0.4936 -0.495
Quartile 2	-0.68	0.5783 -0.5763
Quartile 3	-0.64	0.6059 -0.6057

{}



Cycle 14A: GBT, VLA, and VLBA

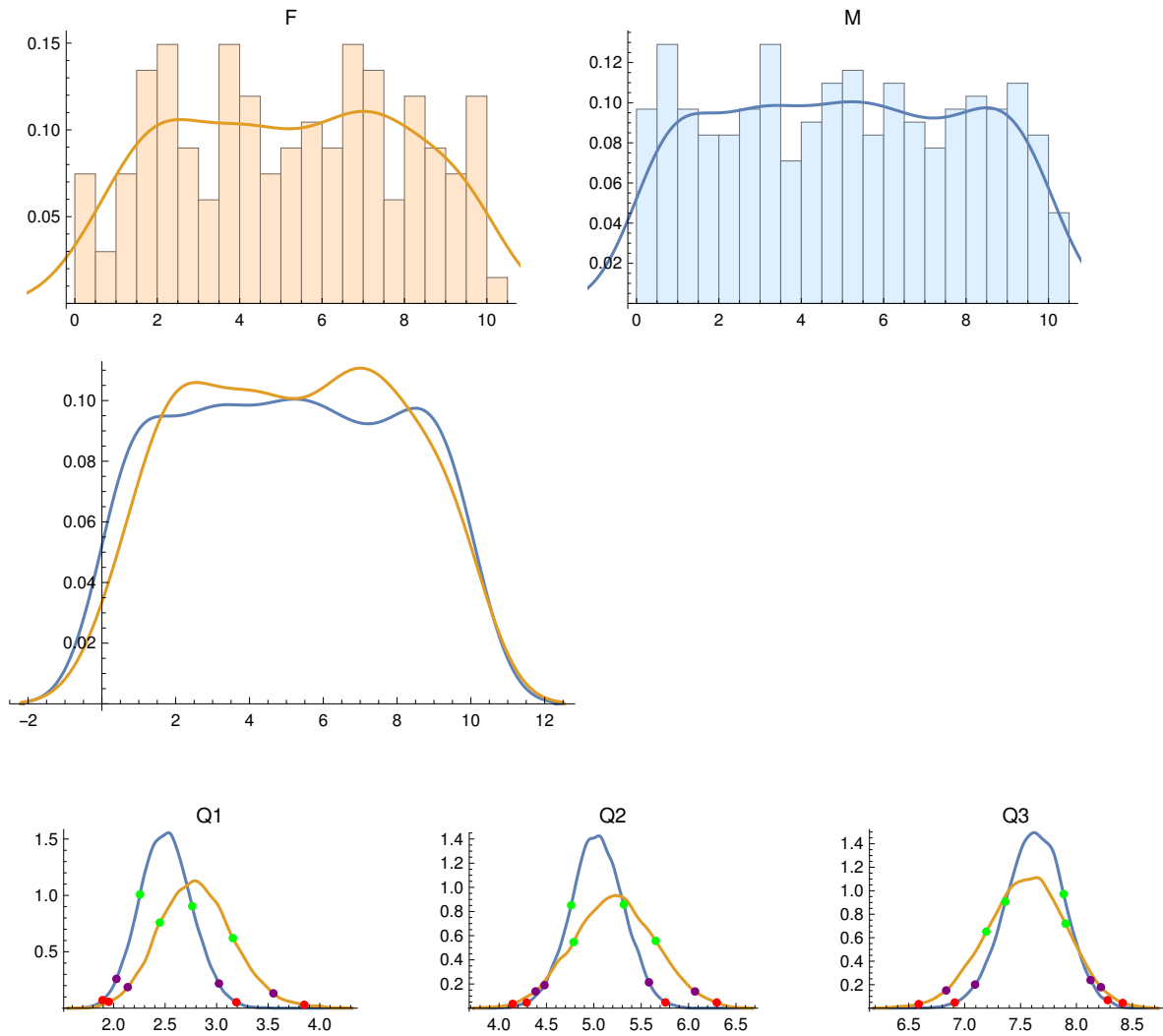
No. Female PIs = 134

No. Male PIs = 310

F PI Quartiles: {2.62, 5.245, 7.46}

M PI Quartiles: {2.61, 5.04, 7.63}

Anderson-Darling two-sample test p-value: 0.569355



## Male PIs:

	Quartile Score	68% CI	95% CI	99% CI
Quartile 1	2.61	2.256 2.763	2.028 3.022	1.893 3.192
Quartile 2	5.04	4.761 5.316	4.48 5.582	4.29 5.756
Quartile 3	7.63	7.364 7.885	7.093 8.126	6.911 8.28

## Female PIs:

	Quartile Score	68% CI	95% CI	99% CI
Quartile 1	2.62	2.448 3.158	2.138 3.55	1.954 3.85
Quartile 2	5.245	4.786 5.653	4.385 6.068	4.143 6.298
Quartile 3	7.46	7.193 7.903	6.835 8.219	6.589 8.414

## Quartile differences, F minus M:

	diff.	upper/lower error bars
Quartile 1	0.01	0.4347 -0.4324
Quartile 2	0.205	0.5173 -0.5115
Quartile 3	-0.17	0.4393 -0.4402

{}

Cycle 14B: GBT, VLA, and VLBA

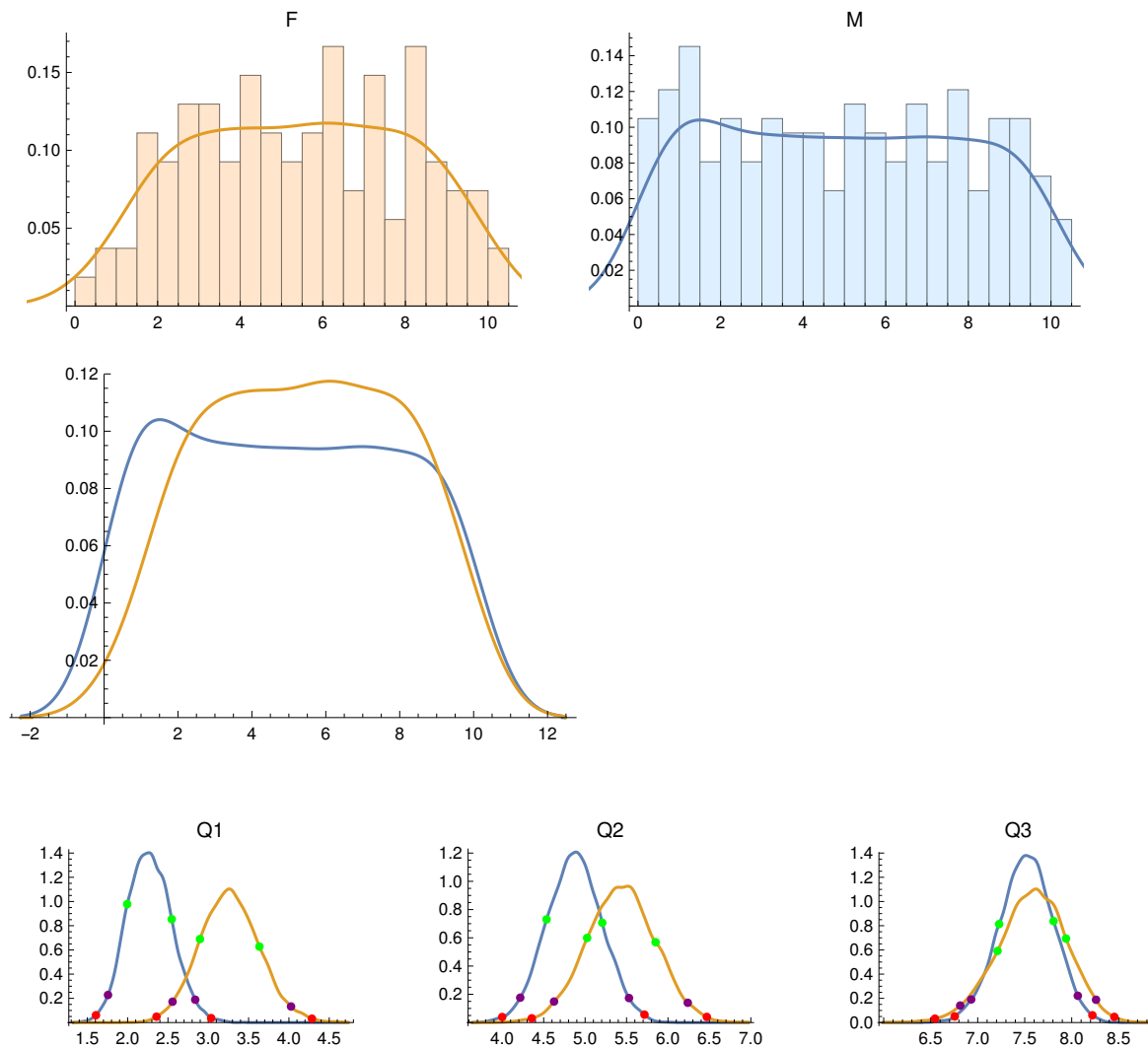
No. Female PIs = 108

No. Male PIs = 248

F PI Quartiles: {3.24, 5.495, 7.52}

M PI Quartiles: {2.22, 4.93, 7.56}

Anderson-Darling two-sample test p-value: 0.0490073



## Male PIs:

	Quartile Score	68% CI	95% CI	99% CI
Quartile 1	2.22	1.995 2.547	1.757 2.838	1.607 3.036
Quartile 2	4.93	4.535 5.207	4.217 5.529	3.999 5.716
Quartile 3	7.56	7.228 7.807	6.931 8.065	6.756 8.22

## Female PIs:

	Quartile Score	68% CI	95% CI	99% CI
Quartile 1	3.24	2.897 3.634	2.557 4.026	2.358 4.285
Quartile 2	5.495	5.025 5.85	4.625 6.239	4.356 6.469
Quartile 3	7.52	7.211 7.939	6.814 8.259	6.545 8.453

## Quartile differences, F minus M:

	diff.	upper/lower error bars
Quartile 1	1.02	0.4592 -0.4552
Quartile 2	0.565	0.5356 -0.5216
Quartile 3	-0.04	0.4641 -0.4561

{}

Cycle 15A: GBT, VLA, and VLBA

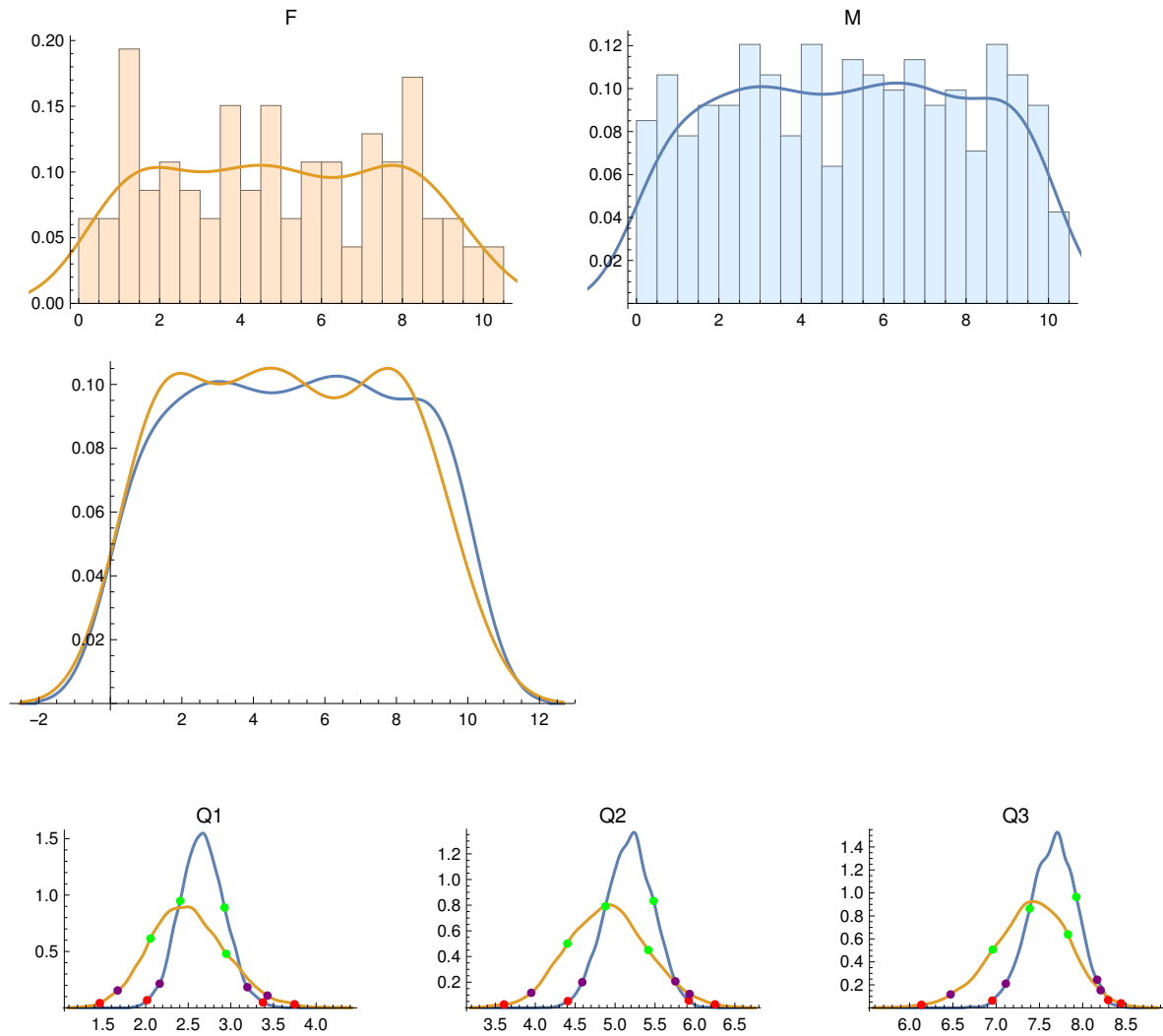
No. Female PIs = 93

No. Male PIs = 282

F PI Quartiles: {2.425, 4.78, 7.5275}

M PI Quartiles: {2.69, 5.225, 7.62}

Anderson-Darling two-sample test p-value: 0.731496



## Male PIs:

	Quartile Score	68% CI	95% CI	99% CI
Quartile 1	2.69	2.406 2.927	2.165 3.194	2.017 3.376
Quartile 2	5.225	4.879 5.483	4.589 5.755	4.408 5.923
Quartile 3	7.62	7.388 7.926	7.112 8.167	6.956 8.294

## Female PIs:

	Quartile Score	68% CI	95% CI	99% CI
Quartile 1	2.425	2.057 2.946	1.672 3.43	1.461 3.747
Quartile 2	4.78	4.403 5.415	3.95 5.933	3.609 6.251
Quartile 3	7.528	6.961 7.829	6.474 8.207	6.137 8.443

## Quartile differences, F minus M:

	diff.	upper/lower error bars
Quartile 1	-0.265	0.5121 -0.5098
Quartile 2	-0.445	0.5923 -0.583
Quartile 3	-0.0925	0.5055 -0.5121

{}

Cycle 15B: GBT, VLA, and VLBA

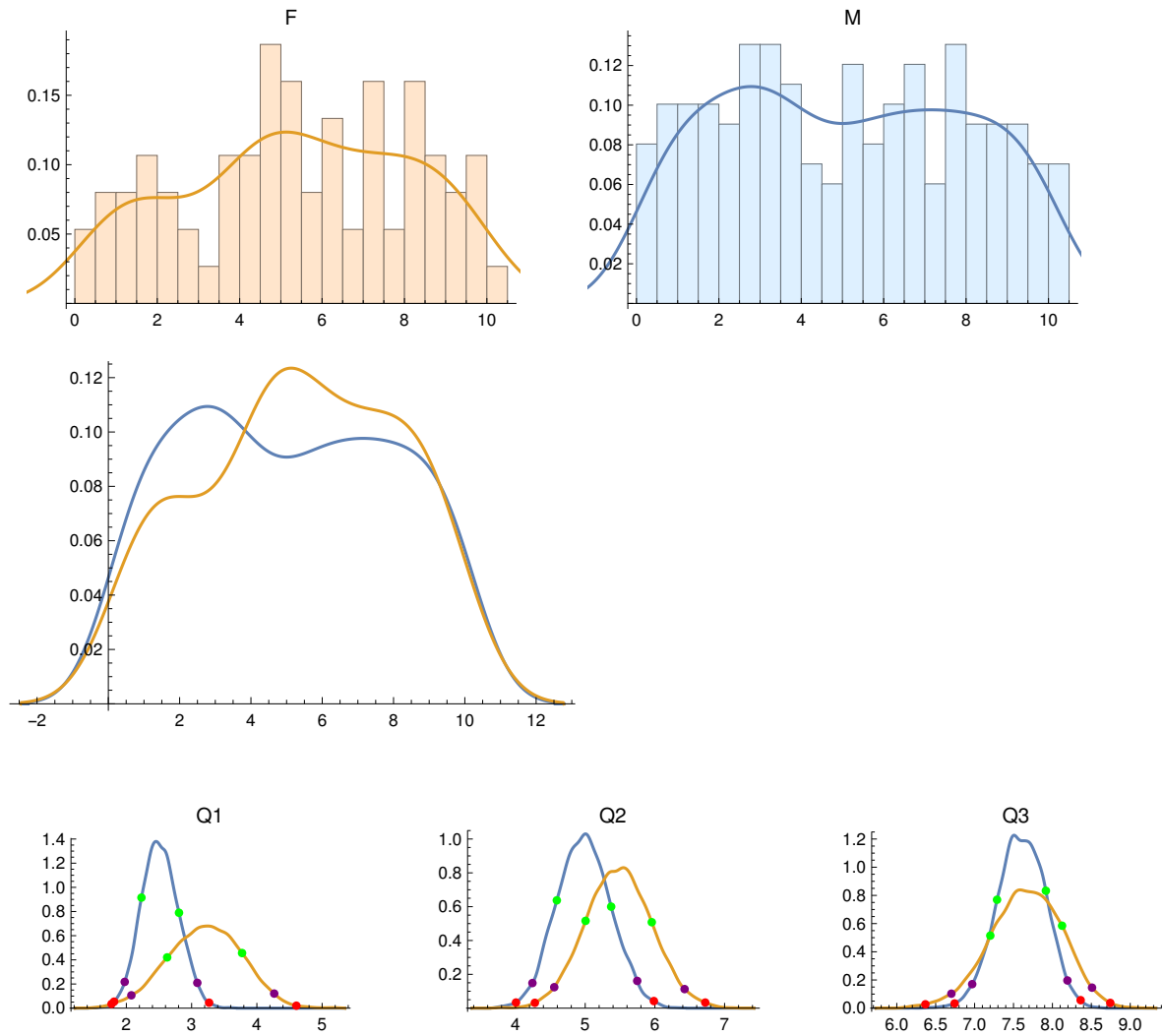
No. Female PIs = 75

No. Male PIs = 199

F PI Quartiles: {3.565, 5.38, 7.77}

M PI Quartiles: {2.5, 5., 7.6025}

Anderson-Darling two-sample test p-value: 0.489273



## Male PIs:

	Quartile Score	68% CI	95% CI	99% CI
Quartile 1	2.5	2.231 2.807	1.975 3.087	1.812 3.268
Quartile 2	5.	4.593 5.373	4.243 5.746	4.007 5.986
Quartile 3	7.602	7.288 7.916	6.969 8.193	6.743 8.363

## Female PIs:

	Quartile Score	68% CI	95% CI	99% CI
Quartile 1	3.565	2.625 3.773	2.077 4.266	1.773 4.605
Quartile 2	5.38	5.005 5.955	4.556 6.426	4.278 6.723
Quartile 3	7.77	7.202 8.124	6.702 8.509	6.368 8.743

## Quartile differences, F minus M:

	diff.	upper/lower error bars
Quartile 1	1.065	0.6356 -0.6395
Quartile 2	0.38	0.6123 -0.6165
Quartile 3	0.1675	0.5634 -0.5639

{}



Cycle 16A: GBT, VLA, and VLBA

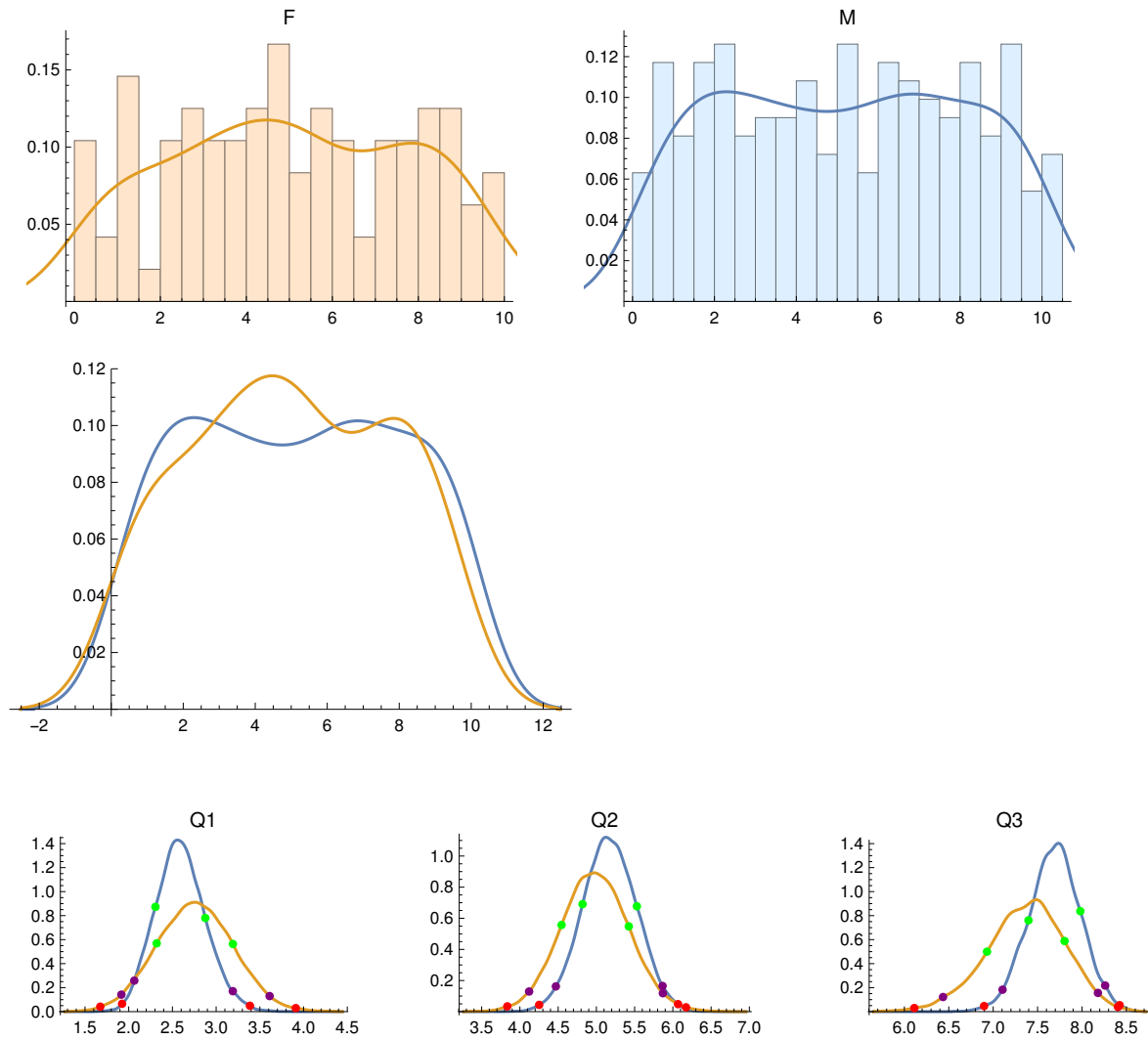
No. Female PIs = 96

No. Male PIs = 222

F PI Quartiles: {2.93, 4.9, 7.495}

M PI Quartiles: {2.46, 5.17, 7.67}

Anderson-Darling two-sample test p-value: 0.652991



## Male PIs:

	Quartile Score	68% CI	95% CI	99% CI
Quartile 1	2.46	2.306 2.876	2.064 3.191	1.924 3.387
Quartile 2	5.17	4.819 5.529	4.47 5.865	4.252 6.068
Quartile 3	7.67	7.398 7.982	7.105 8.261	6.898 8.424

## Female PIs:

	Quartile Score	68% CI	95% CI	99% CI
Quartile 1	2.93	2.32 3.192	1.916 3.611	1.675 3.911
Quartile 2	4.9	4.545 5.424	4.12 5.869	3.836 6.172
Quartile 3	7.495	6.931 7.804	6.435 8.18	6.112 8.405

## Quartile differences, F minus M:

	diff.	upper/lower error bars
Quartile 1	0.47	0.5315 -0.5306
Quartile 2	-0.27	0.5673 -0.5596
Quartile 3	-0.175	0.5263 -0.5216

{}

Cycle 16B: GBT, VLA, and VLBA

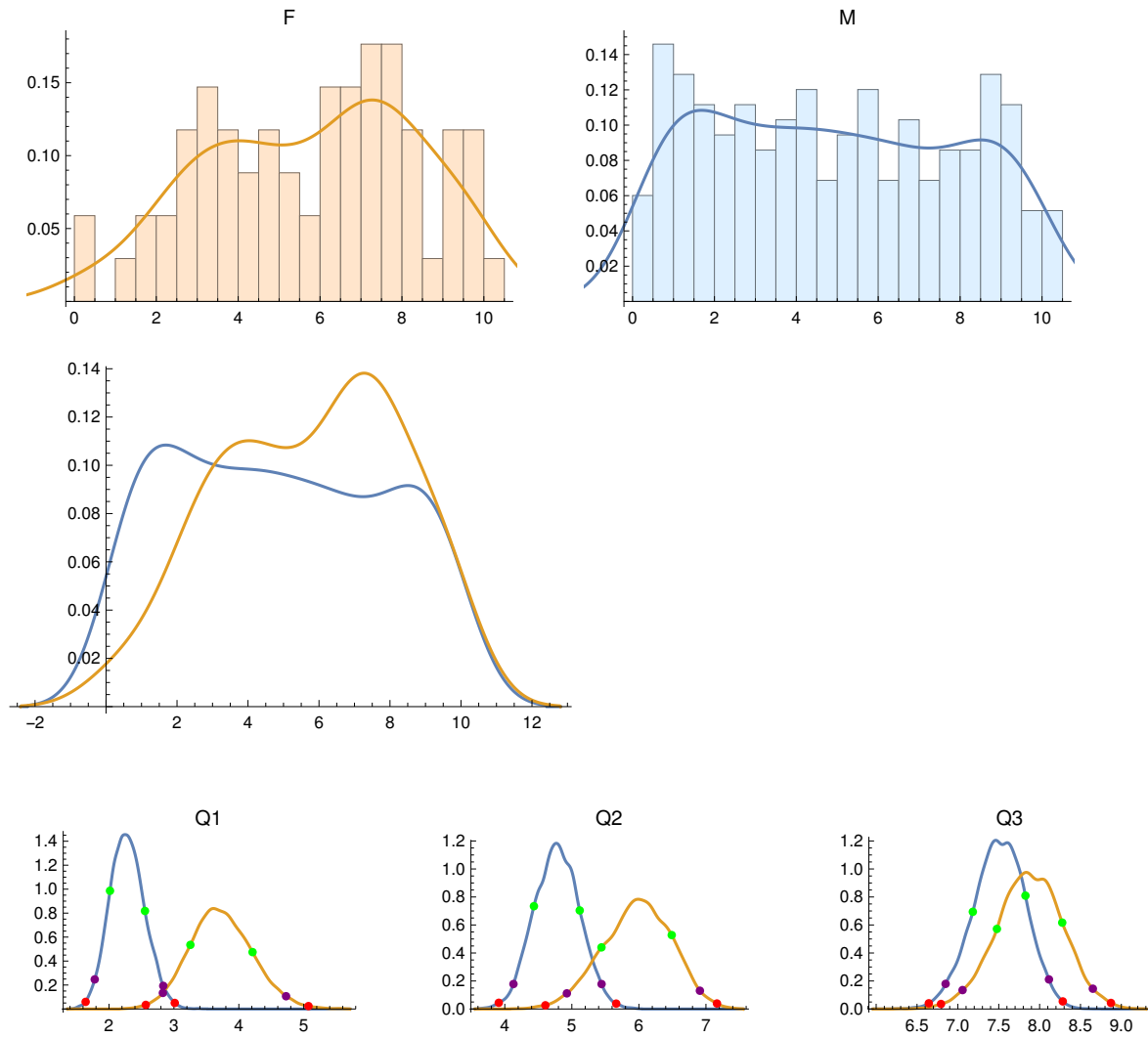
No. Female PIs = 68

No. Male PIs = 233

F PI Quartiles: {3.69, 6.16, 7.69}

M PI Quartiles: {2.2075, 4.74, 7.5225}

Anderson-Darling two-sample test p-value: 0.0187326



## Male PIs:

	Quartile Score	68% CI	95% CI	99% CI
Quartile 1	2.208	2.015 2.554	1.78 2.836	1.64 3.013
Quartile 2	4.74	4.435 5.118	4.129 5.443	3.91 5.662
Quartile 3	7.522	7.183 7.827	6.85 8.114	6.644 8.284

## Female PIs:

	Quartile Score	68% CI	95% CI	99% CI
Quartile 1	3.69	3.254 4.211	2.83 4.727	2.567 5.073
Quartile 2	6.16	5.442 6.49	4.926 6.91	4.605 7.164
Quartile 3	7.69	7.478 8.277	7.057 8.651	6.793 8.873

## Quartile differences, F minus M:

	diff.	upper/lower error bars
Quartile 1	1.4825	0.5455 -0.5466
Quartile 2	1.42	0.6147 -0.6182
Quartile 3	0.1675	0.5214 -0.5149

{}

Out[1]= NRA0GenderBiasTableThrough16B.xls